

Today's

# Industrial Products & Solutions™

The Complete Purchasing Guide for Today's Industrial Market

February 2023

[www.tipsmag.net](http://www.tipsmag.net)

JLG Offers New Bi-Energy  
Option on Popular Compact  
Crawler Boom Lift Models

Industrial-Grade VIZZ Headlamps  
Maximize Safety, Reliability





# FEDERAL KNIFE, INC.

## Industrial Cutting Knives



1-800-23-KNIFE (800-235-6433) • 812-364-1418 (fax)  
P.O. Box 509 • 785 County Line Road • Palmyra, IN 47164



### REPLACEMENT SHEAR BLADES DELIVERED FROM STOCK

Shear Blades or All Equipment Makes:

- CINCINNATI • WYSONG & MILES • HTC • ACCUR-SHEAR •
- PACIFIC • AMERICAN HERCULES • NIAGARA • PEXTO
- AMADA • STEELWELD/CLEVELAND CRANE
- BETENBENDER • ATLANTIC / HACO
- LODGE & SHIPLEY / COLUMBIA • CENTURY • HERR-VOSS
- STANDARD • EDWARDS/ PEARSON • ADIRA • GATTI • LVD
- DI-ACRO / ELGA-HYDRA • HYDRAPOWER • STAMCO
- BERTSCH • GUIFIL • SAFAN • DARLEY • RHODES
- MORGAN • SUMMIT • DREIS & MANY OTHERS

### Precision Blade Sharpening Is Our Specialty!!

*Shear blades made from high quality tool steels "performance matched" to your unique cutting application.*

*Call one of our product specialists for more information.*

[www.federalknife.com](http://www.federalknife.com)

[sales@federalknife.com](mailto:sales@federalknife.com)



## WE WILL BEAT ANY

COMPETITOR'S QUOTED PRICE  
FOR NEW REPLACEMENT SHEAR  
BLADES

BY 5% OR MORE GUARANTEED \*

\* PRESS BRAKE TOOLING \* METAL SLITTERS \* SLITTING SUPPLIES \* 1-800-23-KNIFE \*

# Southern Stud Weld, Inc.

[www.studweld.com](http://www.studweld.com)

Manufacturer and Supplier of Stud Welding Equipment, Accessories and Fasteners.



Stud Welding is a versatile, one-step metal fastening system. It is an instantaneous welding process in which a metal fastener is end-joined to a metal surface by creating a high quality fusion weld.

## WE ARE YOUR ONE STOP SHOP

### *Industries We Serve*

Aerospace  
Appliances  
Automotive  
Construction  
Electronics  
Food Service

Insulation Installation  
Light/Heavy Duty Equipment  
Offshore  
Petrochemical  
Shipbuilding  
Signs and Decorative Trim



*Two Locations To Serve You*

15603 West Hardy Road.  
Houston, TX 77060  
**800-929-0296**  
713-691-0897  
Sales-Houston@studweld.com

3645 Conflans Road  
Irving, TX 75061  
**877-929-6707**  
972-790-3339  
Sales-Dallas@studweld.com



## TIPS Contents • February 2023

PG 4	Three Gloves, One Mission: Comfortable Compliance
PG 8	JLG Offers New Bi-Energy Option on Popular Compact Crawler Boom Lift Models
PG 12	OPEN MIND Introduces hyperMILL® 2023 CAD/CAM Software Suite featuring New Capabilities, Optimizations for Higher Productivity
PG 16	CERATIZIT MaxiMill 273 Maximizes Productivity with 16 Useable Cutting Edges
PG 20	Industrial-Grade VIZZ Headlamps Maximize Safety, Reliability
PG 24	Ad Index



# Today's Industrial Products & Solutions

Vol. 23 Issue 2

## PRESIDENT

Glen Hobson  
205-441-5591  
glen@tipsmag.net

## ASSOCIATE PUBLISHER

Bart Beason  
205-624-2180  
bart@tipsmag.net

## ADMINISTRATIVE DIRECTOR

Steven Hobson  
steven@tipsmag.net

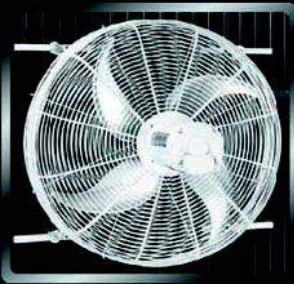
## EDITOR

Brandon Greenhill  
brandon@handfmedia.net

## CREATIVE/ WEB DIRECTOR

Jacklyn Greenhill  
jacklyn@handfmedia.net

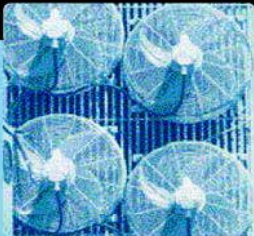
## Get Cool!



Extend  
transformer  
life!

Increase  
transformer  
capacity up  
to 166%!

- expert technical assistance
- large inventory
- low sound levels
- one-piece cast aluminum blades
- energy-efficient motors
- galvanized or stainless steel guards



quality engineered, performance tested

p.o. box 187 germantown, wisconsin 53022

262.255.2310

[www.krenzvent.com](http://www.krenzvent.com)

P.O. Box 1568 • Pelham, AL 35124  
Phone: 205-441-5591 • Fax: 205-624-2185  
[www.tipsmag.net](http://www.tipsmag.net)  
[info@tipsmag.net](mailto:info@tipsmag.net)

# SDP

Southern Digital  
Publishing

*Today's Industrial Products & Solutions™* is published ten times a year on a monthly basis by Southern Digital Publishing, Inc. *Today's Industrial Products & Solutions™* is distributed free to qualified subscribers. Non-qualified subscription rates are \$57.00 per year in the U.S. and Canada and \$84.00 per year for foreign subscribers (surface mail). U.S. Postage paid at Birmingham, Alabama and additional mailing offices.

*Today's Industrial Products & Solutions™* is distributed to qualified owners and managers in the industrial industry. Publisher is not liable for all content (including editorial and illustrations provided by advertisers) of advertisements published and does not accept responsibility for any claims made against the publisher. It is the advertiser's or agency's responsibility to obtain appropriate releases on any item or individuals pictured in an advertisement. Reproduction of this magazine in whole or in part is prohibited without prior written permission from the publisher.

POSTMASTER: Send address changes to  
Southern Digital Publishing, Inc. P.O. Box 1568  
Pelham, AL 35124  
PRINTED IN THE USA



Why Laser Lines and Projected Signs?  
Because, You're Sick of Painting & Taping!

# NEW SOCIAL DISTANCING GOBO Images For LightCop.



**DOCK RIGHT**  
LASER DOCKING TECHNOLOGY  
Dock Right Laser System, Div. of LTBL Tech, LLC  
LOSS PREVENTION FOR THE 21ST CENTURY  
[www.LTBLtech.com](http://www.LTBLtech.com)

**LTBL** TECH "The Original"  
**LIGHTCOP**  
- Loss Prevention For The 21st Century -



[www.LTBLtech.com](http://www.LTBLtech.com)

615.593.0510



# Three Gloves, One Mission: Comfortable Compliance



## *They'll Never Want to Take Off Brass Knuckle® SmartFlex™ 400 Series*

With long-lasting comfort comes increased compliance. That's the thought behind the SmartFlex™ 400 Series hand protection from Brass Knuckle®. Three gloves, each designed with a 13-gauge nylon shell offering abrasion resistance, uncoated back and wrist to encourage all-day wear, and ultra-thin polyurethane coating on the palm and finger area for an amazingly sensitive gripping surface. Every glove in the 400 Series enables accurate handling of even the smallest of parts, whether in dry or light oil applications.

These thin-gauge general purpose gloves are ideal for everything from electronics repair to small parts assembly. The SmartFlex 400 Series combines outstanding dexterity, lightweight comfort, and protection from injury. BK401 is black nylon with gray coating to conceal dirt and grime. BK402 is white-on-white, making it easy to identify foreign particles on the glove, ideal for inspectors and quality control. BK403 is black nylon with a black coating, a tough-looking concealer for grimy projects. Each model is available in seven different sizes with color-coded cuffs to simplify re-issuance.

Each glove in the series is carefully constructed, designed for fit, but also cost-competitive. The lightweight, 13-gauge nylon shell provides dexterity and grip and is more lint-free than polyester. A grippy





# SAFELY Lifts Up To 500 lbs!

- Ergonomic
- Portable
- Lightweight
- Meets OSHA & ASME Requirements

## Customized Safety Lifting Devices For Any Application

Available in both  
**CHAIN & CABLE**  
Configurations



The Sky Hook is your personal safety lifting solution, preventing lifting injuries while saving you both time and money!

**800-4-SKYHOOK**

800-475-9466 • 208-365-5770

[www.skyhookmfr.com](http://www.skyhookmfr.com)

**SKY HOOK**

ATTCO, Inc. OSA  
by SYCLONE ATTCO SERVICE

but not sticky polyurethane coating on the palm and fingers makes the 400 Series excellent for dry-grip applications.

400 Series gloves are ideal for many applications not requiring cut-level protection, from automotive to warehouse to light construction and assembly. Designed for maximum comfort and ease of use for all-day wear, the 400 Series offers protection and helps increase wearer compliance. Workers will never feel like they have to take these gloves off.

For more information, visit [www.brassknuckleprotection.com](http://www.brassknuckleprotection.com) •

#### About Brass Knuckle

Brass Knuckle® grew out of a partnership with one of North America's oldest dedicated safety product supply companies. From product inception to quality control, we manage every aspect of product development to ensure ergonomics, protection, and cost efficiency, maximizing compliance and safety. Brass Knuckle is a member of the Volk Enterprises family of companies, whose international strategic alliances with documented professional supply partners allow for a full range of safety products, programs, and services to clients across the globe. For more information, contact Brass Knuckle® Safety Products, 1335 Ridgeland Parkway, Suite 120, Alpharetta, GA 30004. Phone: 770-674-8930. [www.brassknuckleprotection.com](http://www.brassknuckleprotection.com).

# SLIP AND FALL PREVENTION!

Since  
1993

NEW!



## TESTING DYNAMIC COEFFICIENT OF FRICTION (DCOF) ASM 925

DIGITAL ASM 825A SLIP METER

WET AND DRY TESTING  
CALIBRATES TO ANSI/NFSI B101.1

---

SAFE FLOORS MAY INCREASE PRODUCTIVITY  
AND WILL CERTAINLY REDUCE LOSSES

---

SCOF RESULTS WITH AN EASY-TO-USE  
PORTABLE FLOOR FRICTION TESTER

---

PH: 941-681-2431 | FAX: 941.681.2487

AMERICAN SLIP METER®

WWW.AMERICANSLIPMETER.COM



AMERICAN SLIP METER®  
INDUSTRIAL AND COMMERCIAL SERVICES  
[www.americanslipmeter.com](http://www.americanslipmeter.com)

### ASM 825A

Digital Slipmeter  
Made in USA

Static Coefficient of Friction Tester

Dry  
Wet

Arrow ← indicates low battery

Test (w/ Calibrate) Dry/Wet



# REDEFINING COMPREHENSIVE ROOFTOP SAFETY

TURN-KEY SAFETY RAIL SOLUTIONS FROM START TO FINISH  
INSPECT | SPECIFY | BUILD | INSTALL



SRC Mobile Safety Rails set the industry standard for OSHA compliant safety solutions to prevent falls and injury.



PROTECT LIVES.  
BE OSHA COMPLIANT.  
CONTACT US TODAY.



**SafetyRailCompany**  
Fall Protection for Life and Compliance

SAFETYRAILCOMPANY.COM | 888.434.2720



# BI-ENERGY

## JLG Offers New Bi-Energy Option on Popular Compact Crawler Boom Lift Models

*Emissions-free lithium-ion battery with a dependable diesel engine to work anywhere*

JLG Industries, Inc., an Oshkosh Corporation company [NYSE:OSK] and a leading global manufacturer of mobile elevating work platforms (MEWPs) and telehandlers, now offers Bi-Energy technology on its X770AJ and X1000AJ compact crawler boom lifts, reducing these machines' noise and exhaust emissions. The innovative system equips these JLG® machines with two (2) full-sized, independent power sources, combining an emissions-free lithium-ion battery pack with a dependable diesel engine to allow operators to work indoors and outside with one machine.

"The Bi-Energy system is designed to maintain the high performance and efficiency our customers expect from the X770AJ and X1000AJ, while minimizing their carbon footprint and decibel levels," says Angela Patterson, JLG Boom Lift Product Management Specialist. "With this option, operators can choose



# Relax On Payroll Fridays

- 5 Minute Friday Payroll
- Internet Based • Encrypted
- Avoid Jail Time and Costly Fines
- Identifies All Davis Bacon Compliance Errors
- 80% Savings of Time and Money Compared to Manual Payroll Preparation



***e - Mars, Inc.***  
"Compliance at your Fingertips"  
58,000+ Construction Clients

**eMarsinc.com**  
**Ph: 480-595-0466**

the best power source for the application (either the engine or the lithium-ion batteries). This dual power source design means that JLG Bi-Energy models can be used in a wide variety of settings — from general greenfield construction projects to environmentally sensitive job sites.”

As an example of how machine operators would utilize this technology, Patterson says, “Using the engine’s power, users can drive the machine to where the overhead work needs to be done, and they can switch to zero-emissions, all-electric battery power to work at height for the remainder of the shift. When the work is done, the users can power the engine back up and drive the machine for use at another location.”

The X770AJ comes with a 100Ah 76V lithium-ion battery pack, while the X1000AJ has a 150Ah 76V lithium-ion battery pack; the lithium-ion batteries can be charged from an outlet at any time, including while the machine is in use. Both machines have a Kubota D902 21.6-hp at 3,200 rpm diesel engine.

These models also boast commonality with other JLG compact crawler boom lift models, increasing

operators’ familiarity and confidence when using these machines. “Both new Bi-Energy models use the same console box layout as the rest of our compact crawler boom lift line, simply adding two new buttons to switch between the independent power sources,” says Patterson.

With these features, Patterson says that JLG’s Bi-Energy X770AJ and X1000AJ compact crawler boom lift models are ideally suited for use in cold weather applications and are also useful in airport and aviation, building construction and restoration, cleaning, data centers, electrical, facility and grounds maintenance, HVAC, industrial and petrochemical facilities, plumbing and warehouse applications. “The Bi-Energy option offers equipment owners and operators more flexibility and versatility than ever before to use these popular compact crawler boom lifts,” concludes Patterson.

The new Bi-Energy option will be available on additional JLG compact crawler boom lifts in the future.

For more information on JLG products and services, please visit [www.JLG.com](http://www.JLG.com) •

## "PROP THAT DOOR OPEN WITH THE PROPPER"

Commercial, Residential, Industrial, Hotel/Motel & Deliveries

- ❑ Compact, Lightweight - Only 5 oz.
- ❑ Magnitized for Convenient Storage
- ❑ Easy To Open, Folds When Not In Use
- ❑ Safe, Secure Design, Never Slips Off Hinge



[www.ProprierStopper.com](http://www.ProprierStopper.com)

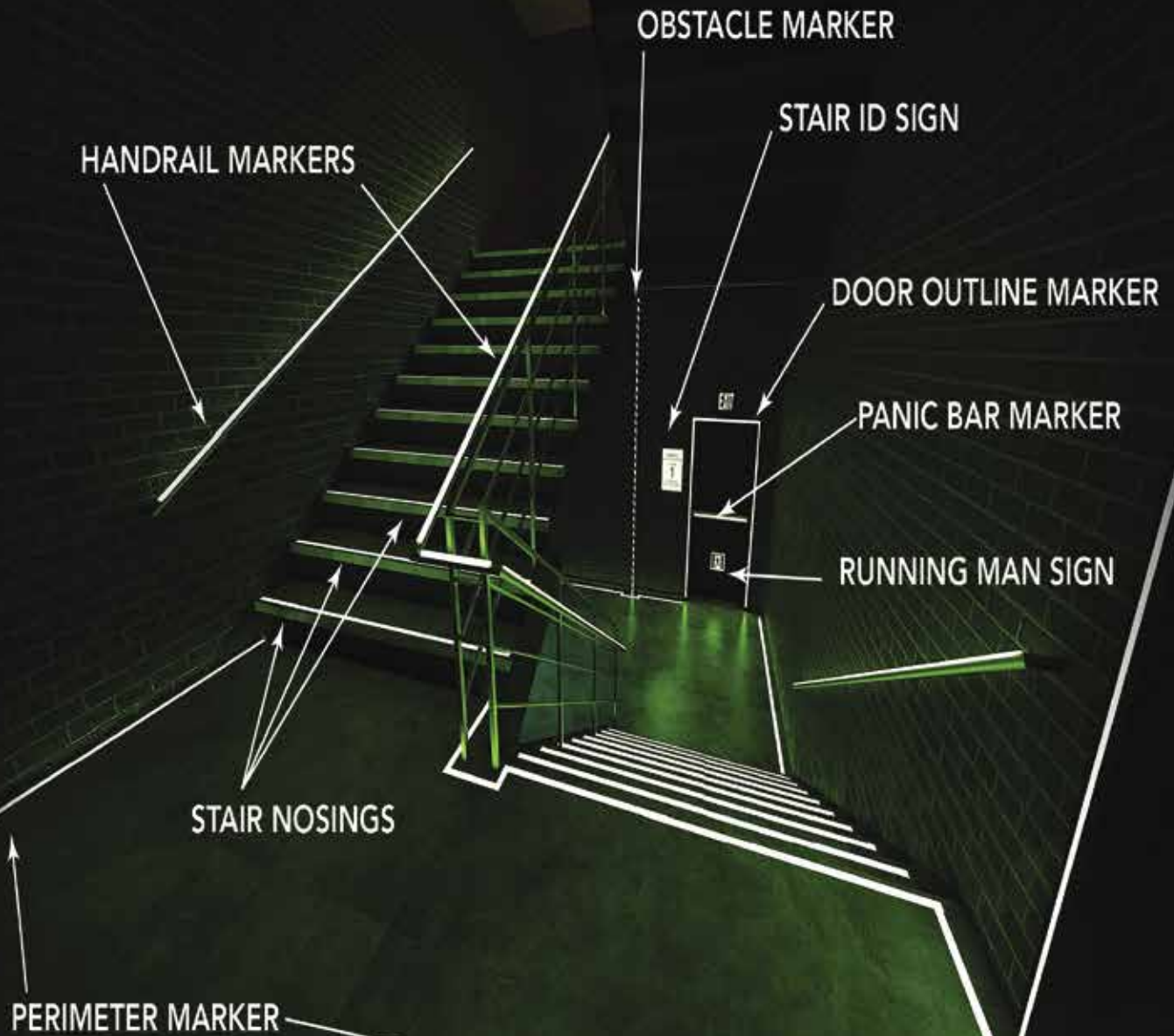
MADE IN USA 



# Safe-T-Nose®

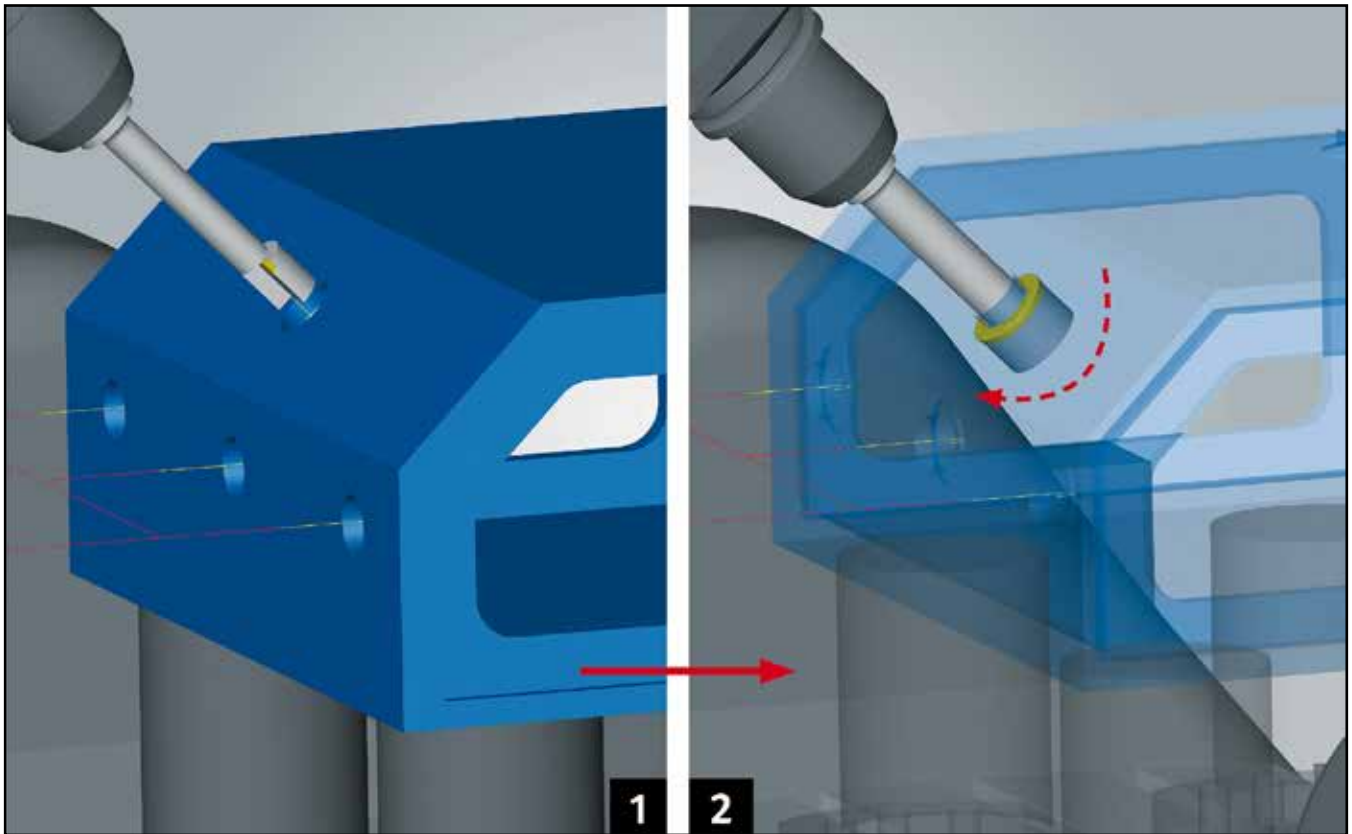
LEAVE NO DOUBT • THIS WAY OUT • EXIT SAFELY

SAFETNOSE.COM • 1-855-723-6673



**IFC/IBC REQUIRED EGRESS  
MARKINGS AND SIGNS**

# OPEN MIND Introduces hyperMILL® 2023 CAD/CAM Software Suite featuring New Capabilities, Optimizations for Higher Productivity



OPEN MIND Technologies, a leading developer of CAD/CAM software solutions worldwide, has introduced its latest hyperMILL® 2023 CAD/CAM software suite which offers users new and enhanced features for even more powerful and simplified NC programming in applications ranging from 2.5D machining to 5-axis milling. “We are pleased to introduce hyperMILL® 2023 to provide our customers with new, powerful CAD/CAM programming strategies, in addition to a wide range of enhancements – all designed to simplify and accelerate programming, improving the user experience,” said Mr. Alan Levine, Managing Director of OPEN MIND Technologies USA, Inc.

## *New and Enhanced CAM Capabilities*

For easy programming of recurring shapes with a single click, hyperMILL® 2023 has a new General Transformation Pattern feature. The new feature uses a selected reference geometry and searches for the same reference in all other models regardless of its spatial orientation, creating a general transformation pattern including associated frames. This is highly useful when there are multiple components.

To ensure the highest level of safety while providing reliable programming when back boring, a new 2.5D Back Boring machining strategy enables back boring tasks to be programmed on machines with





## Custom Insurance for the Construction Industry

### With XINSURANCE, You Get...

- All-In-One Approach
- Agent Friendly
- Limits up to \$10MM
- Property & Casualty
- Professional Liability
- Commercial Auto Liability  
(available in most states)
- Products Liability
- Exclusions/Gaps in Current Coverage & More

Ask us  
about our new  
coverage option –  
Communicable  
Disease  
Liability



To get your free  
custom insurance  
quote for the  
construction industry,  
visit [www.xinsurance.com](http://www.xinsurance.com)

You can also contact  
Logan Fitzgerald directly at  
**801.304.5562** or  
[loganf@xinsurance.com](mailto:loganf@xinsurance.com)

XINSURANCE is powered by Evolution Insurance Brokers, LC ("EIB"), an excess and surplus lines insurance brokerage. XINSURANCE is a DBA of EIB, which is domiciled in and has its principal place of business in Sandy, Utah. This insurance product is offered by an unlicensed surplus lines insurer. The NPN for EIB is 5464658 and CA license number is OH93938.

# XINSURANCE

different kinematics conveniently and easily. Tool-holders and inserts, as well as monobloc tools, are displayed one-to-one in the virtual machine and checked for collisions. Now programming the controller for countersinking, deburring and milling tools on the once inaccessible back side of a hole can be done with ease.

An enhanced milling surface extension is offered in hyperMILL® 2023 for “3D Z-Level Shape Finishing” and “3D Profile Finishing” strategies, ensuring high-quality and reliable surface extensions when required, even with complex geometries. Users can reliably and easily protect sharp edges and divide up machining areas, especially useful for creating high-quality surfaces in tool and mold-making when combined with a “Smooth Overlap” feature.

### *New Mill-Turn Capabilities, Enhancements*

New for hyperMILL® MILL-TURN capability, now “Smooth Overlap” is available for optimizing finishing paths in turning. This function enables flawless transitions when multiple tools or orientations are required for machining, and approach/retract macros can be used normally.

Also, for more flexible, simplified programming of free-form tools, groove plunging with free tool geometry has been enhanced, as all tool geometries can now be used for any type of workpiece contour when roughing. These same tool setting options, approach and retract

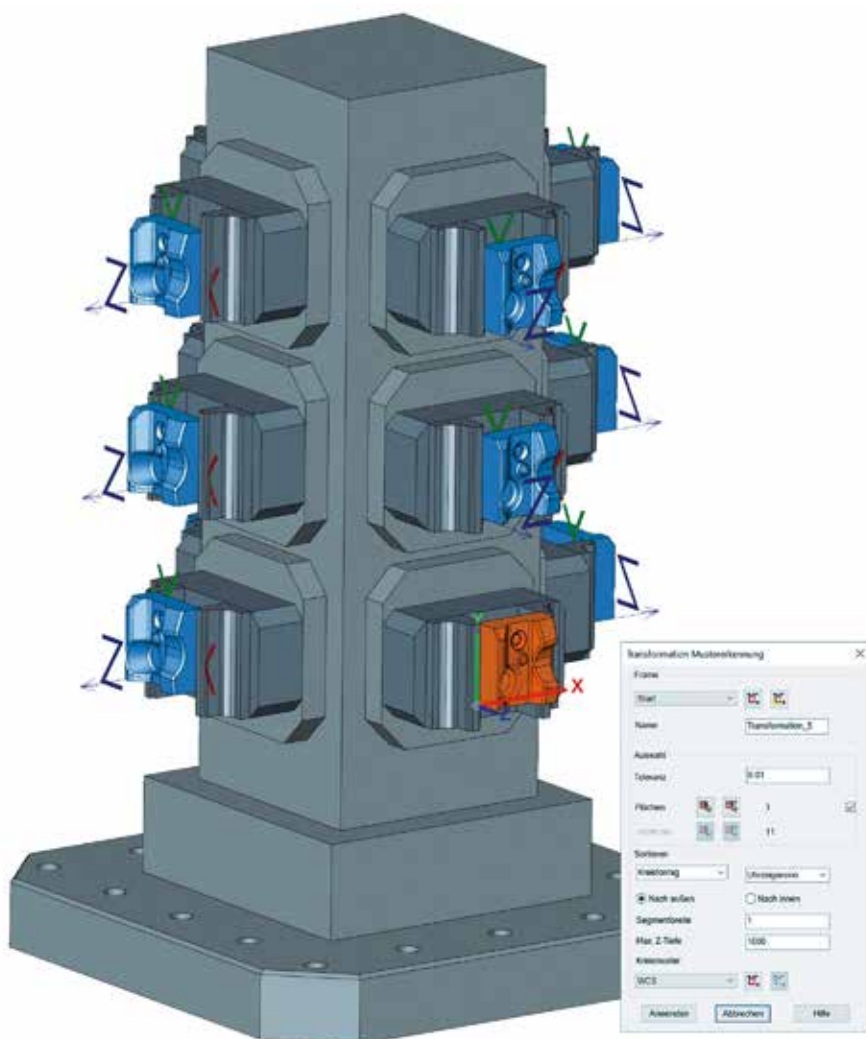
macros are also available for standard tools.

### *Enhancing Virtual Machining*

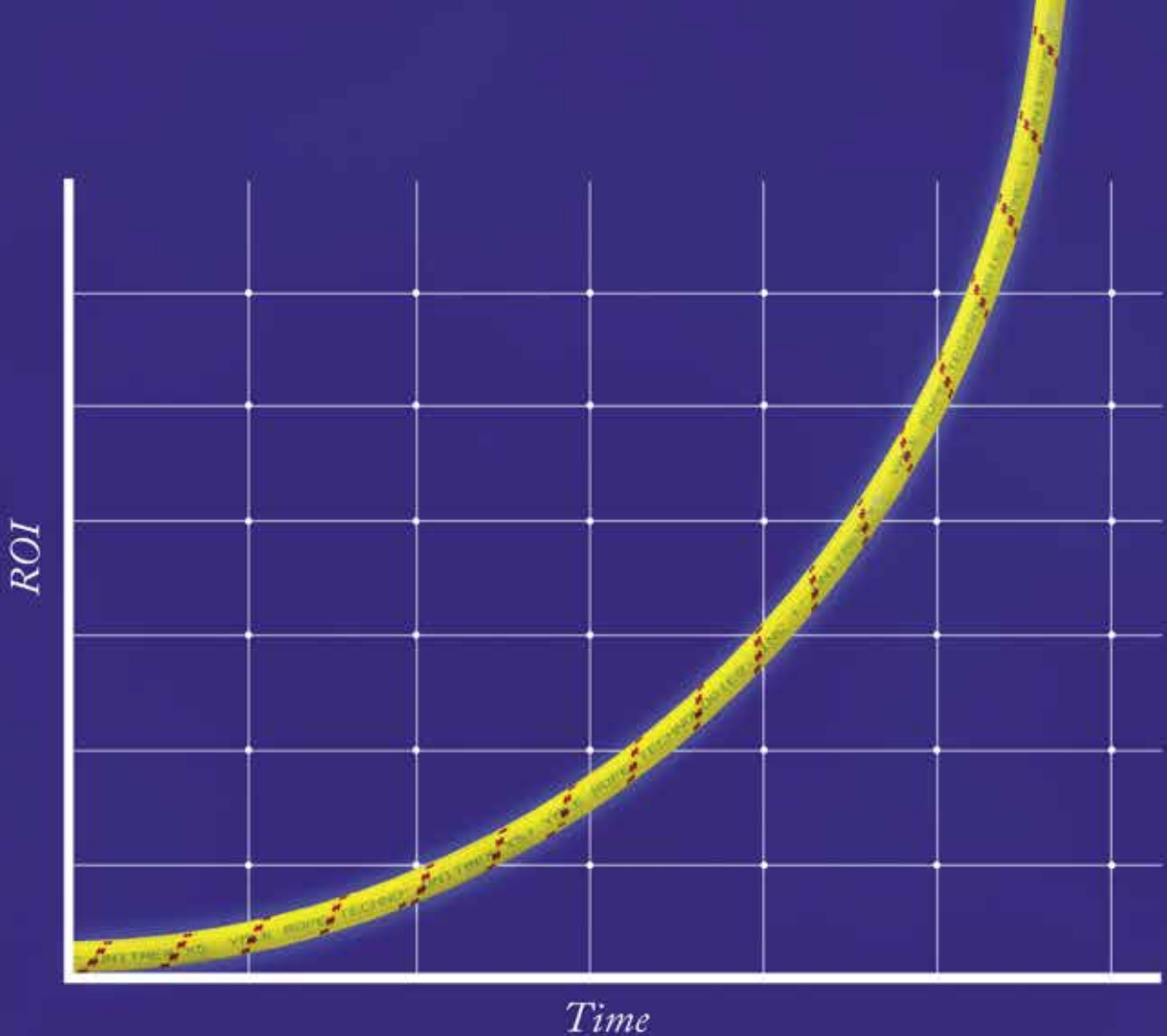
With the introduction of hyperMILL® 2023, the NC Optimizer feature in the hyperMILL® VIRTUAL Machining strategy now optimizes fixed rotary and parallel axes by automatically locating a kinematically correct and collision-free solution. This saves time by eliminating the need to manually interact with the axes.

For more information on hyperMILL® 2023, visit: [New and enhanced capabilities in hyperMILL® 2023](http://www.openmind-tech.com/en.html)

[www.openmind-tech.com/en.html](http://www.openmind-tech.com/en.html) •







## Unitrex XS™ Max Wear. Unmatched performance in the field and in the boardroom.

Electric line stringing is easier and more economical with Unitrex™. Made with a core of Honeywell Spectra®, it is up to 10 times lighter than steel, while delivering comparable strength. The urethane-coated polyester jacket provides excellent abrasion resistance for great productivity that lasts.

To learn more, visit [www.yalecordage.com](http://www.yalecordage.com)

**YALE CORDAGE**  
Performance. Passion. Possibilities.

# CERATIZIT MaxiMill 273 Maximizes Productivity with 16 Useable Cutting Edges



For the utmost in milling productivity, the CERATIZIT MaxiMill 273 Shell Face Milling Cutter provides 16 useable, axially adjustable cutting edges that allow for higher feed rates and guarantee exceptional surface finishes. The MaxiMill 273 is part of CERATIZIT's line of indexable milling cutters that provide quality and flexibility for all milling operations, whether face milling, shoulder milling or high-feed milling.

The MaxiMill 273 combines all the advantages of positive and negative inserts in one cutter that boosts stability and cost-effectiveness while reducing vibration for superior surface finishes. With an approach angle of 44.6° and a maximum feed rate of 2 mm/rev., the MaxiMill 273's high insert thicknesses and strong obtuse corner angles improve stability and contribute to excellent system reliability.

Long, consistent tool life enables lights-out, unmanned production thanks to CERATIZIT's state-of-the-art Dragonskin insert coating technology and efficient wear protection. Plus, the Dragonskin coating



# INDUSTRIAL ROOFTOP SAFETY MADE SIMPLE

TURN-KEY SAFETY RAIL SOLUTIONS FROM START TO FINISH  
INSPECT | SPECIFY | BUILD | INSTALL



SRC Mobile Safety Rails set the industry standard for OSHA compliant safety solutions to prevent falls and injury.



PROTECT LIVES.  
BE OSHA COMPLIANT.  
CONTACT US TODAY.



**SafetyRailCompany**  
Fall Protection for Life and Compliance

SAFETYRAILCOMPANY.COM | 888.434.2720



**WHAT ARE YOU DOING FOR FANS?**




**SUPER DUTY  
FANS**

**BE COOL  
BE SAFE**

**HAPPY EMPLOYEES ARE  
PRODUCTIVE EMPLOYEES  
& THEY DON'T LEAVE**

Brutal summer heat will melt your employee productivity and motivation. Now you can shower them with air to keep them safe and productive with Super Duty Overhead and Floor Fans, the new affordable approach to circulating air in tough industrial areas.



**STARTING  
\$995!  
AT ONLY**

**CALL US OR VISIT  
OUR WEBSITE TODAY**

**SUPERDUTYFANS.COM**  
469-934-6640

© 2022 Super Duty Fans, LLC. All Rights Reserved.

gives the inserts added strength for even the most demanding of machining conditions.

The MaxiMill 273 is exceptionally easy to use and utilizes a very simple clamping mechanism that makes incorrect insert clamping virtually impossible, even without additional clamping devices. The cutter allows users to quickly exchange inserts while the tool remains in the machine to significantly shorten setup time.

See the MaxiMill 273 in action View new product videos now at [www.CuttingTools.CERATIZIT.com](http://www.CuttingTools.CERATIZIT.com) or on the CERATIZIT YouTube channel and learn how the MaxiMill 273 with positive cutting edge geometry is essential for face milling, slot milling and chamfering operations. Also watch machining demonstrations of the MaxiMill 273 cutting steel components.

About CERATIZIT USA, Inc.

Part of the CERATIZIT Group, CERATIZIT USA designs and manufactures high quality standard and custom tooling for the metalworking industry. With headquarters in Schaumburg, Illinois, CERATIZIT USA is a solutions and service provider for many different industry segments, including automotive, aerospace, and energy. With a highly specialized staff, expansive product portfolio and an International Traffic in Arms Regulations (ITAR) registration, CERATIZIT USA provides manufacturers with the complete application engineering, service and training support needed for maximum productivity and cost-effectiveness. For more information visit [www.CuttingTools.CERATIZIT.com](http://www.CuttingTools.CERATIZIT.com) or call 1-800-783-2280.

[www.CuttingTools.CERATIZIT.com](http://www.CuttingTools.CERATIZIT.com) •



**Jesco Industries, Inc.**  
950 Anderson Rd PO Box 388  
Litchfield, MI 49252-0388



**ProGMA**  
PROTECTIVE GUARDING MANUFACTURERS  
*safer by Design*

**Jesco does it best!**

Visit **JescoOnline.com**  
Call **800-529-6697**



800.557.0098 | [golight.com](http://golight.com)

# GO LIGHT



DURABLE  
VERSATILE



POWERFUL  
GUARANTEED

# Industrial-Grade VIZZ Headlamps Maximize Safety, Reliability

*The rugged series offers exceptional brightness and longevity with dimmability – and even an intrinsically safe option for potentially hazardous settings*

For professional trades like utilities, facility maintenance, and construction, Princeton Tec's industrial-grade VIZZ series headlamps are designed to provide powerful, lasting, reliable, hands-free illumination to increase operator safety and productivity in the many low-light work conditions that require it. Whether the job starts before the sun rises or ends after it sets, or operators are working in small or large dark spaces, they need a light that is going to work as hard as they do in whatever conditions that are thrown their way.

Princeton Tec designs and manufactures its headlamps in the U.S. with durable thermoplastic material engineered to withstand drops and rough handling. An IPX7 waterproof rating means the headlamps are thoroughly protected from moisture, providing waterproof integrity down to 1 meter for up to 30 minutes. The U.S. military, and numerous utilities, use these products, which offer a lifetime warranty.

Lightweight 3.2oz VIZZ series headlamps flexibly light up the workspace with two separate modes that the operator can easily switch between at the push of a button: flood which widely illuminates the surroundings, and spot which focuses a bright beam on the task at hand.

The operator can dim and adjust the light level to their personal preference in both modes by holding down the pushbutton to the desired setting. The dimming capability also extends battery life.



The raised button provides ease of use when the operator is wearing gloves.

Since battery life is an important consideration for technicians working 8-to-12-hour shifts, VIZZ series headlamps offers consistent regulated LED illumination. Traditional lights are very bright initially, but immediately begin to dim and continue to dim until the batteries are drained.

These headlamps come with an industrial headlamp kit with a nylon head strap, a rubber hard hat strap, and double-sided Velcro to affix the light to a helmet, if preferred. Three AAA batteries are included.

The VIZZ series is offered in two distinctive headlamp models, the VIZZ II and VIZZ IND. Both appear in POP packaging for facility managers that want to display the products in their vending machines as all specifications are clearly listed.

## *The VIZZ II*

For trades that work in potentially hazardous environments, the intrinsically safe VIZZ II headlamp meets essentially all safety requirements whether for OSHA, Zone 0, or state standards (Classes I, II, III; Divisions 1,2; and Groups A-G). So, there is nothing from the light that could spark a potential fire or explosion in a work environment that could



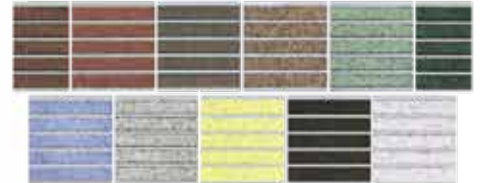


# STAIRMASTER® SAFETY TREADS

Aluminum base protects step from damage

Diamond-hard aluminum oxide grit for maximum durability

Two-tone treads available for improved visibility  
11 Color options to match any decor



Custom cut to fit any stair



## STAIRMASTER®

- Extruded Aluminum Stair Nosings
- For Both Indoor and Outdoor Use
- Excellent safety at a low cost
- Restores and modernizes damaged stairs
- Ready to Install Convenience

**Wooster Products Inc.**

Make every step  
a safe one!

Contact us today for more information  
800-321-4936 | [woosterproducts.com](http://woosterproducts.com)

have flammable gases, vapors, materials, or dusts present.

One Maxbright LED creates a powerful 200 lumen spot beam for long-throw illumination, while 4 Ultrabright LEDs deliver a dimmable flood beam. At close range, the wide beams simulate normal daylight conditions, allowing technicians to use their peripheral vision, while focused narrow beams provide distance illumination. The smooth, white, wide-beam light emitted by Ultrabright LEDs is ideal for close to mid-range tasks. Ultrabright LEDs are usually grouped together to offer a more powerful light source. The headlamp offers a burn time of 102 hours.

#### VIZZ IND

The VIZZ IND headlamp is like the VIZZ II but provides even brighter illumination with a 550-lumen spot beam. However, it is not safety-rated for

hazardous environments. The headlamp offers a burn time of 100 hours.

Although professional industrial-grade headlamps cost a little more up front, the overall cost of ownership is often lower because the batteries typically last 5-6 times longer and do not need to be replaced constantly during work shifts.

Since the rugged headlamps are designed to last for many years in harsh conditions, frequent replacement also is not necessary the way it is with more fragile consumer-grade units.

For more info, call 1-800-257-9080; email questions@princetonotec.com; visit [princetonotec.com](http://princetonotec.com); or write to Princeton Tec, PO Box 8057, Trenton, NJ 08650.

[www.princetonotec.com](http://www.princetonotec.com) •

**LTBLtech, LLC - Call: 615.593.0510**

**DOCK RIGHT**  
LASER DOCKING TECHNOLOGY  
Dock Right Laser System, Div. of LTBLtech, LLC  
LOSS PREVENTION FOR THE 21ST CENTURY  
[www.LTBLtech.com](http://www.LTBLtech.com)

**LTBL TECH "The Original"**  
**LIGHTCOP**  
- Loss Prevention For The 21st Century -

**LASER LINE'S**

**PROJECTED SIGN'S**

**Because Painting & Taping Sucks!**

**Visit us on the web - [www.LTBLtech.com](http://www.LTBLtech.com)**

The advertisement features a collage of images showing laser lines being projected onto a forklift and a projected stop sign on a factory floor. A person is visible in the bottom left corner, standing near the laser lines.





# ESSEX STRUCTURAL STEEL CO., INC.

## Pre-Engineered Buildings Built to Withstand The Rugged Northeast Winters

- Commercial, Industrial and Agricultural Buildings Built to Satisfy Your Building Needs
  - Pre-Engineered Steel Packages
  - Pre-Engineered Post Frame Packages
  - Mini Storage Buildings



*Call For a Quote On  
Your Next Project*

***We Manufacture 26 & 29 ga.  
Steel Roofing & Siding***



# STRUCTURAL STEEL CO., INC.



607 Rt. 13 S, Cortland, NY 13045

**National: 1-800-323-7739**



(607) 753-9384 • Fax: (607) 753-6272 • [www.essexsteel.com](http://www.essexsteel.com)

## Ad Index

Company	Pg.	Website
American Slip Meter	6	www.americanslipmeter.com
Dorlen	24	www.dorlen.com
eMars	9	www.emarsinc.com
Essex Steel Structures	23	www.essexsteel.com
Federal Knife	IFC	www.federalknife.com
Golight	19	www.golight.com
Jesco	18, IBC	www.jescoonline.com
Krenz Vent	2	www.krenzvent.com
LTBL	3, 22	www.ltbltech.com
Maddox	BC	www.maddoxtransformer.com
Propper Stopper	10	www.propperstopper.com
Safe T Nose	11	www.safetnose.com
Safety Rail Co	7, 17	www.safetyrailcompany.com
Sky Hook	5	www.skyhookmfg.com
Southern Stud Weld	1	www.studweld.com
Super Duty Fans	18	www.superdutyfans.com
Wooster	21	www.wooster-products.com
X-Insurance	13	www.xinsurance.com
Yale Cordage	15	www.yalecordage.com



### **OIL ALERT<sup>®</sup>** LIQUID LEAK DETECTOR

**DETECT OIL LEAKS AND SPILLS...FAST!**

- AVOID OPERATIONS SHUT-DOWN
- REDUCE ENVIRONMENTAL RISKS
- MINIMIZE COSTLY CLEAN-UP
- MONITOR OFF-SITE EQUIPMENT

A small amount of oil (1/32 inch) seeping under Oil Alert activates it's loud "on/off" alarm and/or relay contact output. The low profile dome shaped unit guards against undetected leakage in areas of oil lubricated / hydraulic equipment, stand-by generators, pressurized piping and fuel oil storage locations...

**5 year Limited Warranty**

**DORLEN** Products Inc.  
6615 W. Layton Ave. Milwaukee, WI. 53220

**Go to WWW.OIL-ALERT.COM**  
**OR CALL: 1-800-533-6392**  
**FOR MORE INFO!!**





# jESCOHYDRATILT™ DUMPERS



## HYDRAULICALLY CONTROLLED HOPPERS

These units are ideal where control of the quantity of material dumped or the rate of discharge is critical. They operate off the hydraulic system of your forklift and come complete with male quick-disconnect hoses for easy attachment to the forklift.

# jESCO® PARTITIONS



## DIAMOND WIRE MESH ENCLOSURES

Send us the footprint of your project and allow our engineers to assist you on your next project!

Division 10 22 13.



## CONVERT YOUR FORKLIFT INTO A WORK PLATFORM!

Available in 40", 72", 96", and 120" lengths.

jESCO® WORK PLATFORM



# jESCOGARD®

## PROTECTIVE GUARD RAILING

These versatile guards act as both a visual and physical barrier to help protect people and property such as aisles, docks, conveyors and other equipment. Bolted rails are designed and tested to stop a 10,000 lbs load impacting at 4 mph from breaking through. Lift-out rails shown. All hardware is included.



Call 800-529-6697  
Visit [www.JescoOnline.com](http://www.JescoOnline.com)

**jESCO**  
— Since 1932 —<sup>®</sup>

Jesco Industries, Inc.  
Ph: 517-542-2903 Fax: 517-542-2501  
PO Box 388 Litchfield, MI 49252-0388

# Maddox is the one-stop shop for your transformer needs

Founded by a team of industry veterans focused exclusively on the transformer and transformer-related needs of industrial and commercial clients.



## Sell

Maddox stocks and sells the highest quality transformers from dry types and padmounts to substations.

## Rent

With thousands of units in stock, Maddox rents out transformers for the temporary power needs of customers across North America.

## Repair

With shops on both coasts Maddox inspects, tests, and repairs transformers to ensure that they are in top working condition.

## Purchase

We offer a great price that includes handling all the transportation and environmental issue.