

Today's

December 2022

Industrial Products & Solutions™

The Complete Purchasing Guide for Today's Industrial Market

www.tipsmag.net

**Klein Tools®
Launches Heavy
Duty Hinged
Knee Pads for
Comfort and
Added
Protection**

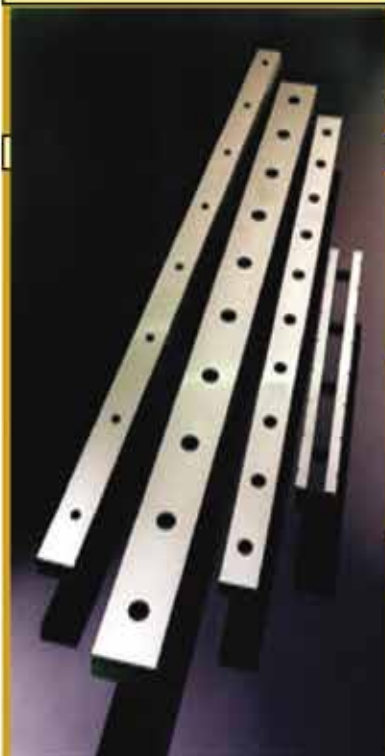
**Ready Outdoor Power
Equipment for Winter Storage,
Prep Your Snow Thrower**

FEDERAL KNIFE, INC.

Industrial Cutting Knives



1-800-23-KNIFE (800-235-6433) • 812-364-1418 (fax)
P.O. Box 509 • 785 County Line Road • Palmyra, IN 47164



REPLACEMENT SHEAR BLADES DELIVERED FROM STOCK

Shear Blades or All Equipment Makes:

- CINCINNATI • WYSONG & MILES • HTC • ACCUR-SHEAR •
- PACIFIC • AMERICAN HERCULES • NIAGARA • PEXTO
- AMADA • STEELWELD/CLEVELAND CRANE
- BETENBENDER • ATLANTIC / HACO
- LODGE & SHIPLEY / COLUMBIA • CENTURY • HERR-VOSS
- STANDARD • EDWARDS/ PEARSON • ADIRA • GATTI • LVD
- DI-ACRO / ELGA-HYDRA • HYDRAPOWER • STAMCO
- BERTSCH • GUIFIL • SAFAN • DARLEY • RHODES
- MORGAN • SUMMIT • DREIS & MANY OTHERS

Precision Blade Sharpening Is Our Specialty!!

Shear blades made from high quality tool steels "performance matched" to your unique cutting application.

Call one of our product specialists for more information.

www.federalknife.com

sales@federalknife.com



WE WILL BEAT ANY

COMPETITOR'S QUOTED PRICE
FOR NEW REPLACEMENT SHEAR
BLADES

BY 5% OR MORE GUARANTEED *



* PRESS BRAKE TOOLING * METAL SLITTERS * SLITTING SUPPLIES * 1-800-23-KNIFE *

jESCOHYDRATILT™ DUMPERS



HYDRAULICALLY CONTROLLED HOPPERS

These units are ideal where control of the quantity of material dumped or the rate of discharge is critical. They operate off the hydraulic system of your forklift and come complete with male quick-disconnect hoses for easy attachment to the forklift.

jESCO® PARTITIONS



DIAMOND WIRE MESH ENCLOSURES

Send us the footprint of your project and allow our engineers to assist you on your next project!

Division 10 22 13.



CONVERT YOUR FORKLIFT INTO A WORK PLATFORM!

Available in 40", 72", 96", and 120" lengths.

jESCO® WORK PLATFORM



jESCOGARD®

PROTECTIVE GUARD RAILING

These versatile guards act as both a visual and physical barrier to help protect people and property such as aisles, docks, conveyors and other equipment. Bolted rails are designed and tested to stop a 10,000 lbs load impacting at 4 mph from breaking through. Lift-out rails shown. All hardware is included.



Call 800-529-6697
Visit www.JescoOnline.com

jESCO
— Since 1932 —[®]

Jesco Industries, Inc.
Ph: 517-542-2903 Fax: 517-542-2501
PO Box 388 Litchfield, MI 49252-0388

TIPS Contents • December 2022

PG 4	Klein Tools® Launches Heavy Duty Hinged Knee Pads for Comfort and Added Protection
PG 8	Ready Outdoor Power Equipment for Winter Storage, Prep Your Snow Thrower
PG 14	Unison Launches Advanced Tube Bending Application App
PG 20	NEW J116F1 Series UL Approved Relay from CIT Relay & Switch
PG 24	Ad Index



Pg 8

Today's Industrial Products & Solutions

Vol. 22 Issue 12

PRESIDENT

Glen Hobson
205-441-5591
glen@tipsmag.net

ASSOCIATE PUBLISHER

Bart Beason
205-624-2180
bart@tipsmag.net

ADMINISTRATIVE DIRECTOR

Steven Hobson
steven@tipsmag.net

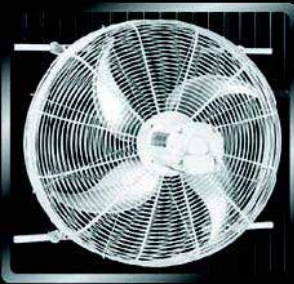
EDITOR

Brandon Greenhill
brandon@handfmedia.net

CREATIVE/ WEB DIRECTOR

Jacklyn Greenhill
jacklyn@handfmedia.net

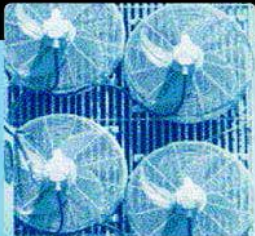
Get Cool!



Extend transformer life!

Increase transformer capacity up to 166%!

- expert technical assistance
- large inventory
- low sound levels
- one-piece cast aluminum blades
- energy-efficient motors
- galvanized or stainless steel guards



quality engineered, performance tested

p.o. box 187 germantown, wisconsin 53022

262.255.2310

www.krenzvent.com

P.O. Box 1568 • Pelham, AL 35124
Phone: 205-441-5591 • Fax: 205-624-2185
www.tipsmag.net
info@tipsmag.net

SDP Southern Digital Publishing

Today's Industrial Products & Solutions™ is published ten times a year on a monthly basis by Southern Digital Publishing, Inc. *Today's Industrial Products & Solutions*™ is distributed free to qualified subscribers. Non-qualified subscription rates are \$57.00 per year in the U.S. and Canada and \$84.00 per year for foreign subscribers (surface mail). U.S. Postage paid at Birmingham, Alabama and additional mailing offices.

Today's Industrial Products & Solutions™ is distributed to qualified owners and managers in the industrial industry. Publisher is not liable for all content (including editorial and illustrations provided by advertisers) of advertisements published and does not accept responsibility for any claims made against the publisher. It is the advertiser's or agency's responsibility to obtain appropriate releases on any item or individuals pictured in an advertisement. Reproduction of this magazine in whole or in part is prohibited without prior written permission from the publisher.

POSTMASTER: Send address changes to
Southern Digital Publishing, Inc. P.O. Box 1568
Pelham, AL 35124
PRINTED IN THE USA

REDEFINING COMPREHENSIVE ROOFTOP SAFETY

TURN-KEY SAFETY RAIL SOLUTIONS FROM START TO FINISH
INSPECT | SPECIFY | BUILD | INSTALL



SRC Mobile Safety Rails set the industry standard for OSHA compliant safety solutions to prevent falls and injury.



PROTECT LIVES.
BE OSHA COMPLIANT.
CONTACT US TODAY.



SafetyRailCompany
Fall Protection for Life and Compliance

SAFETYRAILCOMPANY.COM | 888.434.2720



Klein Tools® Launches Heavy Duty Hinged Knee Pads for Comfort and Added Protection

Klein Tools (www.kleintools.com), for professionals since 1857, introduces the Heavy Duty Hinged Knee Pads, designed to provide a durable, comfortable knee pad solution for the most rugged and tough environments.

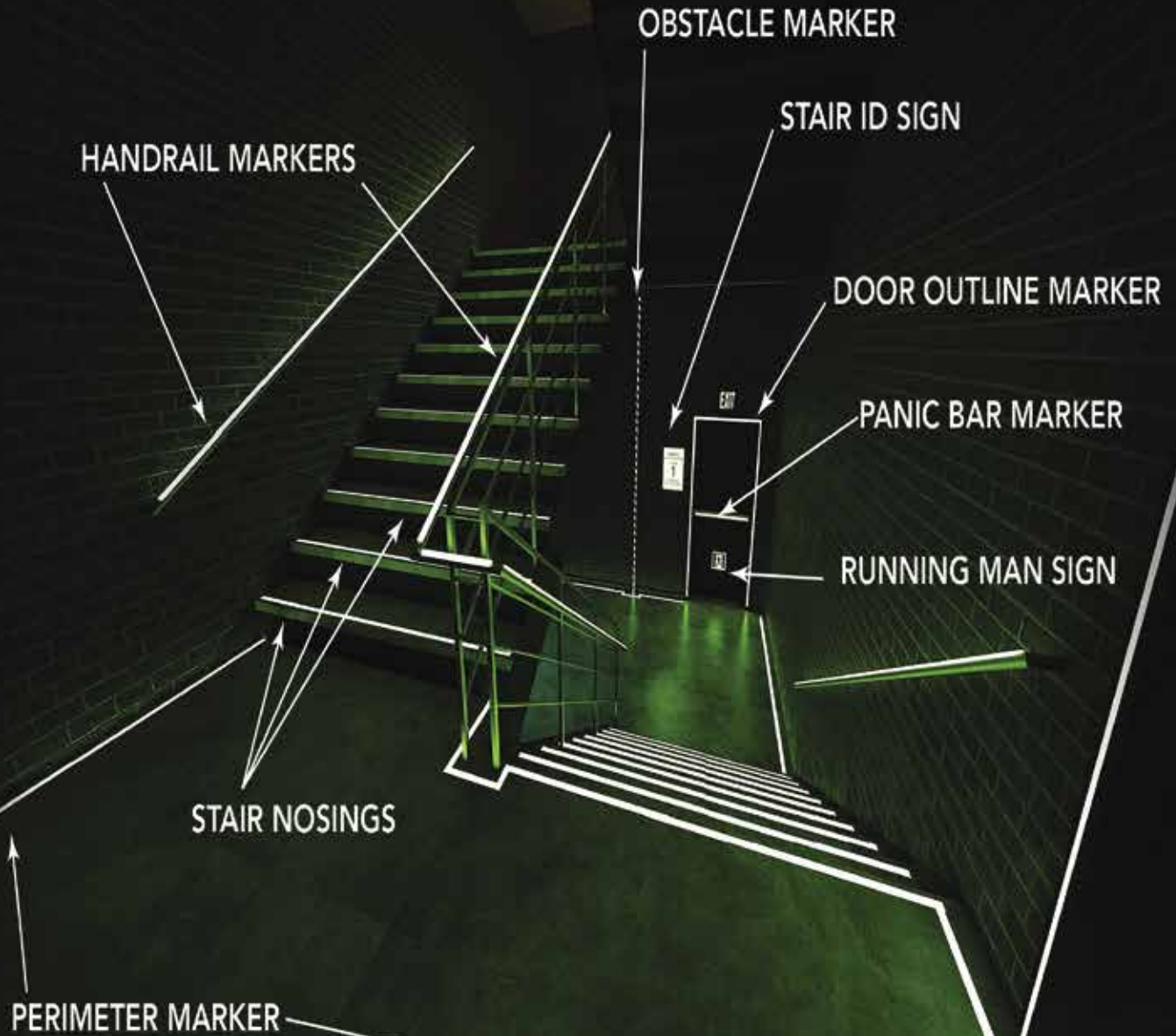
Heavy Duty Hinged Knee Pads (Cat. No. 60491)

- Heavy Duty Hinged Knee Pads contain a gel and foam padded pocket to maximize pressure distribution for all day comfort
- Large knee pad surface provides stability and rounded edges provide agility when moving side to side

Safe-T-Nose®

LEAVE NO DOUBT • THIS WAY OUT • EXIT SAFELY

SAFETNOSE.COM • 1-855-723-6673



**IFC/IBC REQUIRED EGRESS
MARKINGS AND SIGNS**



- Hinged thigh strap keeps knee pads in place during use
- Adjustable quick-fasten buckle plus hook and loop strap provide secure fit
- Heavy duty stitching, hard plastic and metal rivets for durability
- Perfect for jobsites that require heavy duty protection for the knee
- Sold in pairs

“Professionals in various trades, both indoor and outdoor, require work on or near the ground, which can cause stress and pain to their knees,” says Chandler Duchaine, product manager at Klein Tools. “These new Heavy Duty Hinged Knee Pads are perfect for all-day heavy duty knee protection. The gel and foam padded pockets distribute pressure for comfort, and the large knee pad surface provides stability and agility when moving side to side. Plus, an adjustable quick-fasten buckle and hook means a secure fit.”

For more information on Klein Tools safety products, visit www.kleintools.com/safety or search for #NewKleins on social media.

www.kleintools.com/safety •

INDUSTRIAL ROOFTOP SAFETY MADE SIMPLE

TURN-KEY SAFETY RAIL SOLUTIONS FROM START TO FINISH

INSPECT | SPECIFY | BUILD | INSTALL



SRC
SITE SAFE

PROVEN PROCESS

INSPECT | SPECIFY | BUILD | INSTALL

SRC Mobile Safety Rails set the industry standard for OSHA compliant safety solutions to prevent falls and injury.



PROTECT LIVES.
BE OSHA COMPLIANT.
CONTACT US TODAY.



SafetyRailCompany
Fall Protection for Life and Compliance

SAFETYRAILCOMPANY.COM | 888.434.2720



Ready Outdoor Power Equipment for Winter Storage, Prep Your Snow Thrower

Prep Equipment for Seasonal Changes, Save Time and Future Headaches

After your lawn gets its last seasonal cut, it is time to put away spring and summer outdoor power equipment, like lawn mowers, leaf blowers, and trimmers. What's next? Snow throwers, generators and other small engine equipment need to be readied for winter. How and when you prepare your equipment for seasonal changes can save you time and money later, says the Outdoor Power Equipment Institute (OPEI).

"Over the last few years, we've learned our outdoor spaces are more important than ever so making sure you've got the means to care for your yard is critical," says Kris Kiser, President and CEO of the Outdoor Power Equipment Institute and Equip. "Preparation is everything -- understanding how to store equip-



SAFELY Lifts Up To 500 lbs!

- Ergonomic
- Portable
- Lightweight
- Meets OSHA & ASME Requirements

Customized Safety Lifting Devices For Any Application

Available in both
CHAIN & CABLE
Configurations



The Sky Hook is your personal safety lifting solution, preventing lifting injuries while saving you both time and money!

800-4-SKYHOOK

800-475-9466 • 208-365-5770

www.skyhookmfr.com

SKY HOOK

ATTCO, Inc. OSA
by SYCLONE ATTCO SERVICE

ment and get it serviced, how to operate it safely, and how to ready your space to use that equipment.”

OPEI encourages everyone to follow their manufacturer’s guidelines and to keep kids and pets away from operating equipment at all times. Here are a few tips to ensure proper equipment storage, maintenance and safe handling:

1. Review owner’s manuals. Know how to handle equipment safely including how to turn off equipment quickly and safely. Lost manuals can be found online. Save a copy on your computer, so it can be consulted when needed.
2. Service all equipment. Before storing spring and summer equipment, clean and service it

or take it to a small engine repair shop. Drain and change engine oil and safely dispose of old oil. Service the air filter, and do other maintenance as directed by the owner’s manual. Check winter equipment and see if any maintenance and repairs are required.

3. Handle fuel properly. Unused fuel left in gas tanks over the winter can go stale and even damage equipment. Before storing equipment, add fuel stabilizer to the gas tank, then run the equipment to distribute it. Turn the engine off, allow the machine to cool, then restart and run until the gas tank is empty. For winter equipment, buy the recommended type of fuel no more than 30 days before use. Use fuel with no more than 10% ethanol in outdoor power equipment. Use a fuel stabilizer if recommended by the manufacturer. Get more information at LookBeforeYouPump.com.

4. Charge batteries. Remove and fully charge batteries before storing. Don’t store batteries on metal shelves or allow them to touch metal objects. Store them on a plastic or wood shelf in a climate-controlled structure.

5. Shelter equipment from winter weather. Store spring and summer equipment in a clean and dry place such as a garage, barn or shed. Winter equipment should be kept away from the elements, but be easily available for use.

jesco
— Since 1932 —

Jesco Industries, Inc.
950 Anderson Rd PO Box 388
Litchfield, MI 49252-0388

ProGMA
PROTECTIVE GUARDING MANUFACTURERS ASSOCIATION
Safer by Design

Jesco does it best!

Visit **JescoOnline.com**
Call **800-529-6697**



Custom Insurance for the Construction Industry

With XINSURANCE, You Get...

- All-In-One Approach
- Agent Friendly
- Limits up to \$10MM
- Property & Casualty
- Professional Liability
- Commercial Auto Liability
(available in most states)
- Products Liability
- Exclusions/Gaps in Current Coverage & More

Ask us
about our new
coverage option –
Communicable
Disease
Liability



To get your free
custom insurance
quote for the
construction industry,
visit www.xinsurance.com

You can also contact
Logan Fitzgerald directly at
801.304.5562 or
loganf@xinsurance.com

XINSURANCE is powered by Evolution Insurance Brokers, LC ("EIB"), an excess and surplus lines insurance brokerage. XINSURANCE is a DBA of EIB, which is domiciled in and has its principal place of business in Sandy, Utah. This insurance product is offered by an unlicensed surplus lines insurer. The NPN for EIB is 5464658 and CA license number is OH93938.

XINSURANCE

WHAT ARE YOU DOING FOR FANS?



SUPER DUTY FANS

**BE COOL
BE SAFE**

**HAPPY EMPLOYEES ARE
PRODUCTIVE EMPLOYEES
& THEY DON'T LEAVE**

Brutal summer heat will melt your employee productivity and motivation. Now you can shower them with air to keep them safe and productive with Super Duty Overhead and Floor Fans, the new affordable approach to circulating air in tough industrial areas.



**STARTING
\$995!
AT ONLY**

CALL US OR VISIT
OUR WEBSITE TODAY

SUPERDUTYFANS.COM
469-934-6640

© 2022 Super Duty Fans, LLC. All Rights Reserved

6. Prepare, prepare, prepare. Make space in the garage or basement before the weather changes, so there is room to store larger yard items. Clean up your yard. Remove sticks, debris, dog and kid's toys and other items that can damage or destroy equipment. Clear the paths used regularly in your yard.
7. Use generators with care. Keep heavy duty weatherproof extension cords on hand. Ensure the length of the cord will connect to the generator when it is a safe distance from the house or building. Never operate a generator indoors, in a garage, breezeway or under an open window. Install a carbon monoxide detector in your home.

SLIP AND FALL PREVENTION!

Since 1993

NEW!



**TESTING DYNAMIC
COEFFICIENT OF
FRICTION (DCOF)
ASM 925**

DIGITAL ASM 825A SLIP METER

**WET AND DRY TESTING
CALIBRATES TO ANSI/NFSI B101.1**

**SAFE FLOORS MAY INCREASE PRODUCTIVITY
AND WILL CERTAINLY REDUCE LOSSES**

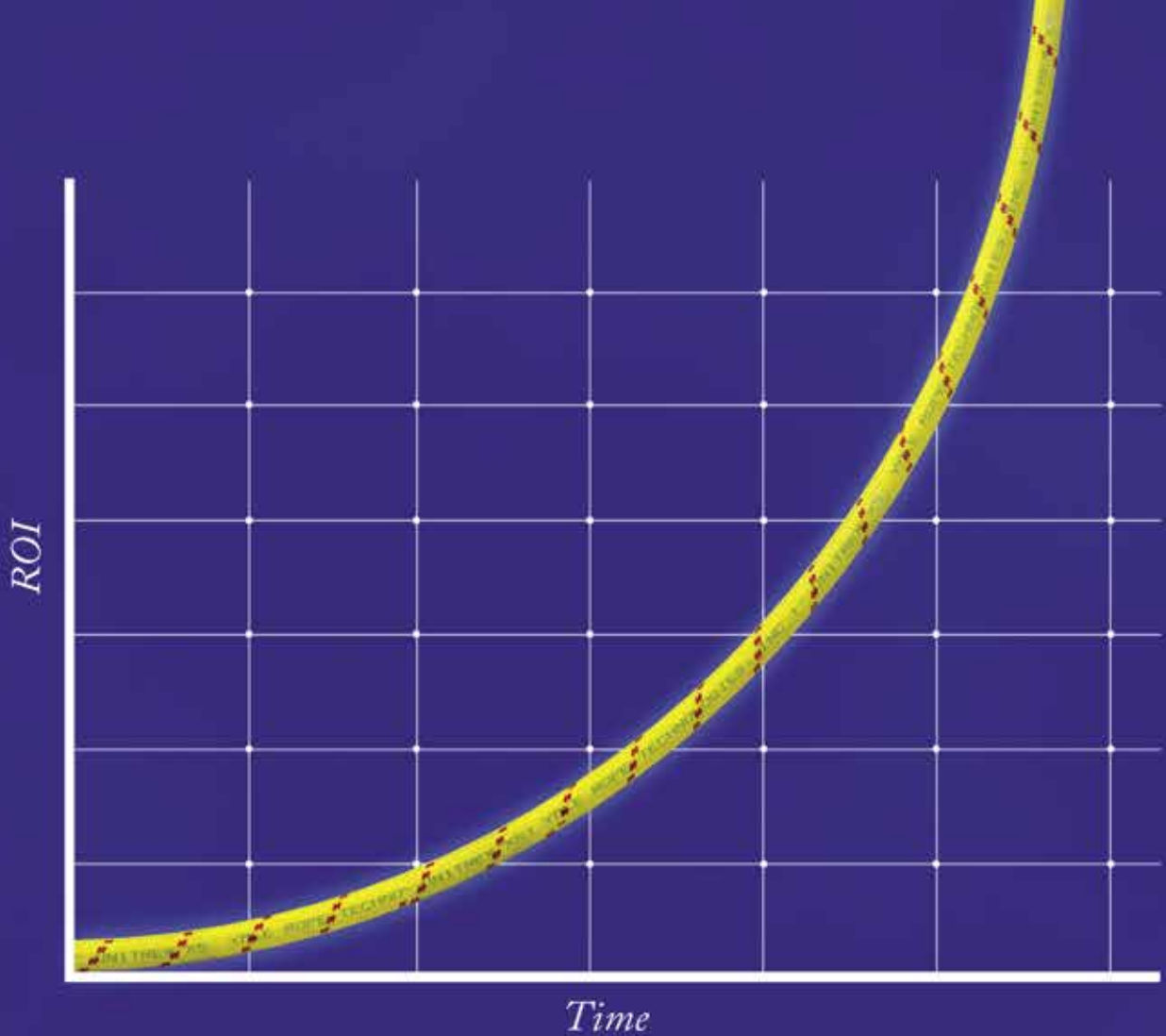
**SCOF RESULTS WITH AN EASY-TO-USE
PORTABLE FLOOR FRICTION TESTER**

PH: 941-681-2431 | FAX: 941.681.2487

AMERICAN SLIP METER®

WWW.AMERICANSLIPMETER.COM





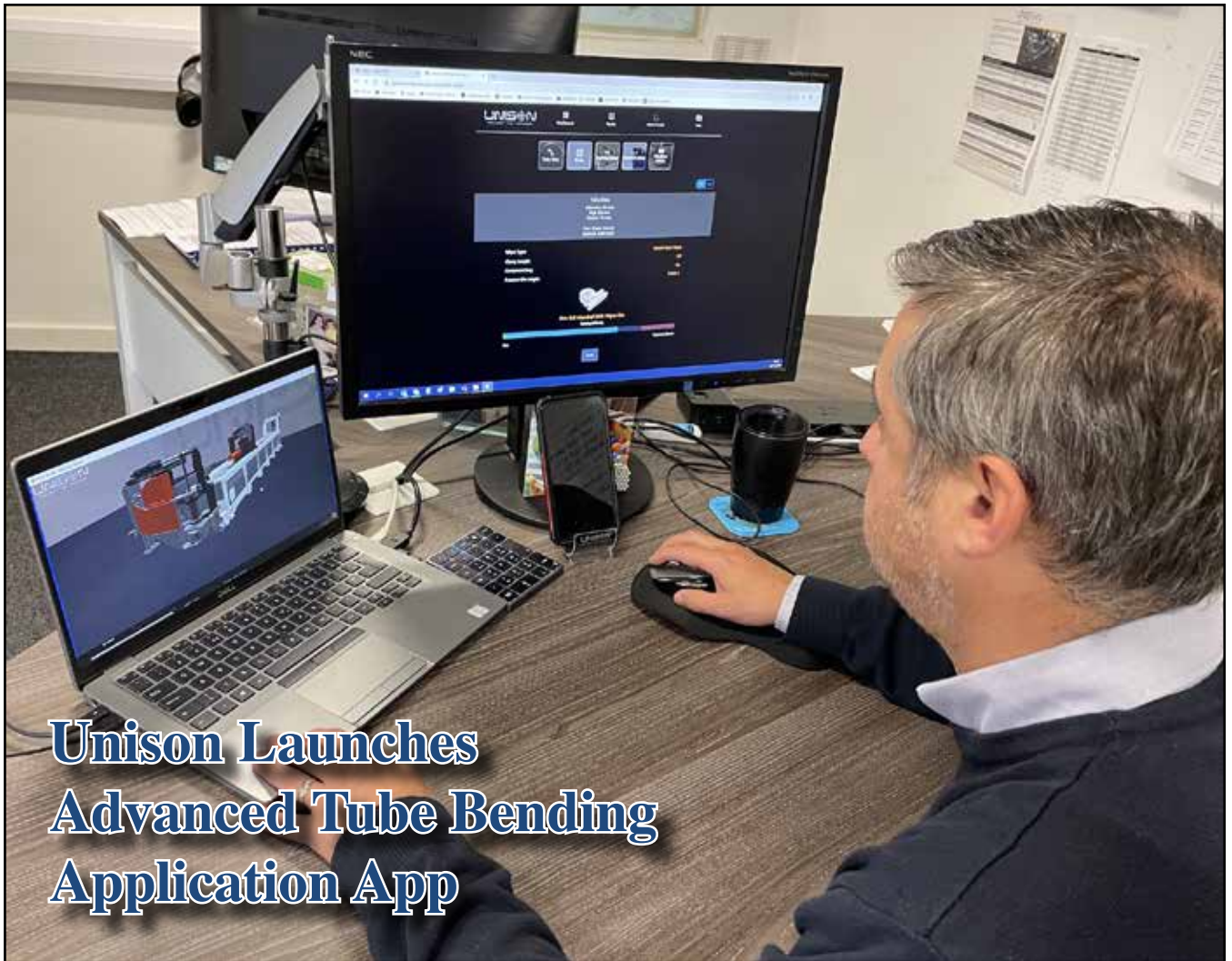
Unitrex XS™ Max Wear. Unmatched performance in the field and in the boardroom.

Electric line stringing is easier and more economical with Unitrex™. Made with a core of Honeywell Spectra®, it is up to 10 times lighter than steel, while delivering comparable strength. The urethane-coated polyester jacket provides excellent abrasion resistance for great productivity that lasts.

To learn more, visit www.yalecordage.com

YALE CORDAGE
Performance. Passion. Possibilities.

77 Industrial Park Road | Saco, Maine 04072 | p (207) 282-3396, f (207) 282-4620



Unison Launches Advanced Tube Bending Application App

Unison Ltd, the UK's premier manufacturer of tube and pipe bending machines, has launched an all-new version of its industry leading, free-to-use Tube Bending Application app. With intuitive new features, it is believed to be the most advanced app of its kind for users of tube bending machinery.

The app makes it simple and straightforward for tube bending machinery operators to establish the required tooling type, mandrel style, size and material, as well as bend torque and machine size. As an additional benefit, a clear, simple indication of 'application difficulty' - the difficulty of bending virtually any metal, wall thickness and diameter - is also provided. Where customers are looking to bend new components or start new projects, but do not have the correct tooling or machinery, the app provides a valuable feasibility/viability check, detailing essential data regarding the equipment they will need to use.

New user-friendly features

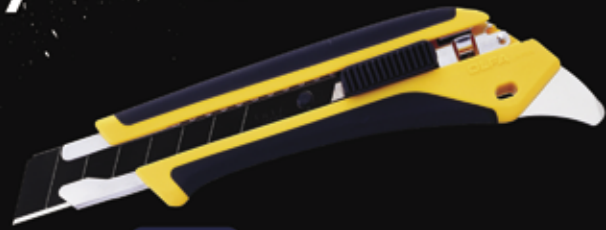
In creating their all-new Tube Bending Application app, Unison's in-house software design team introduced a whole range of user-friendly, intelligent new features. These include a new project-specific fil-

UPGRADE YOUR

BLADE

X-Series Fiberglass-Reinforced Snap-Blade Utility Knives

- Jobsite tough
- Anti-slip grip
- Extra sharp black blades



LA-X 18mm
3/4"



XH-1 25mm
1"



MXP-AL 18mm
3/4" **NEW**
2019

Learn why *Nothing Cuts Like an OLFA*

OMEGA

SAFETY BARRIERS & GUARDS



SAFETY BARRIERS



R-U-F PORTABLE BARRIERS



PIPE GUARDS



COLUMN GUARDS



CORNER SHIELDS



BOLLARDS



HANDRAILS & GATES



RACK GUARDS



QUIK-STEP STAIRS



TRAK-SHIELD

Downspout Pipe Guards, HDPE Bollard Covers and many other safety products available.

www.omegaindl.com

800-521-8272

Omega Industrial Products - The Nation's Leading Supplier Of Safety Barriers & Guarding Products

ing system and a new dashboard for instant access to tube data, project notes, tooling setup, mandrel setup and machine power. There is an updated conversion tool for transforming XYZ coordinates into YBC bending data. As in previous versions of the app, units of measurement can be displayed as either metric or imperial, while reports can be downloaded in PDF format for desktop filing, sharing, review and consideration.

First introduced in 2012 for iPhone, and regularly updated, Unison's Tube Bending Application app quickly became an essential tool for application engineers and tooling designers. As the app grew in popularity, and requests for android and desktop operating systems were received, in 2018 it became fully web-based, with a mobile-friendly look and feel.

Revolutionising the way bend data is calculated

"Since it was first launched some ten years ago, our free Tube Bending Application app has revolutionised the way customers calculate bending criteria, providing them with a rapid insight into the necessary tooling setup, machine type and torque required to successfully complete even the most complex of bends," comments Unison Ltd's joint managing director, Alan Pickering. "Never content to rest on our laurels, in our latest app, we have made significant improvements to useability and navigation, as well as enabling users to organise files into a folder structure that can be accessed across all their devices. We will soon also be linking the data created by the app to our comprehensive bend tool quoting and manufacturing offer. This will provide users with a seamless, rapid means of costing and ordering any tooling they require.

"Before creating our all-new app," he continues, "we took the time to consult with a number of customers – all to ensure that it would bring even greater value to their tube and pipe bending processes. The new app does precisely that and is a further reflection of

INDUSTRIAL ROOFTOP SAFETY MADE SIMPLE

TURN-KEY SAFETY RAIL SOLUTIONS FROM START TO FINISH
INSPECT | SPECIFY | BUILD | INSTALL



SRC Mobile Safety Rails set the industry standard for OSHA compliant safety solutions to prevent falls and injury.



PROTECT LIVES.
BE OSHA COMPLIANT.
CONTACT US TODAY.



SafetyRailCompany
Fall Protection for Life and Compliance

SAFETYRAILCOMPANY.COM | 888.434.2720

our commitment to not only build world-leading tube bending machines, but also provide the finest software and support systems to maximise their usage. We are incredibly proud that around the world, Unison software is considered to be the most user-friendly for tube manipulation tasks."

How to access Unison's new Tube Bending Application app:

Companies wishing to register to use Unison's new app simply need visit <https://app.unisonltd.com>

Existing users will be able to enjoy all the new features of the app when they next log in.

Unison Ltd: intelligent tube technology

Unison Ltd is the UK's leading manufacturer of tube and pipe bending machines and continually innovates the tube and pipe bending marketplace. The company manufactured the world's first all-electric tube bender in 1994, followed by the world's first all-electric multi-stack tube bender, then the world's largest all-electric tube bender for the shipbuilding industry. Available in single-stack, multi-stack and right/left varieties, Unison machines are delivered to more than 20 countries globally. Unison's tube bending software is recognised as the most user-friendly control system for tube bending machines. The software is written and supported by Unison, ensuring complete control of its evolution, with no need for third party support.

www.unisonltd.com •

LTBLtech, LLC - Call: 615.593.0510

DOCK RIGHT
LASER DOCKING TECHNOLOGY
Dock Right Laser System Div. of LTBLtech, LLC
LOSS PREVENTION FOR THE 21ST CENTURY
www.LTBLtech.com

LTBL TECH "The Original"
LIGHTCOP
- Loss Prevention For The 21st Century -

LASER LINE'S

PROJECTED SIGN'S

Because Painting & Taping Sucks!

Visit us on the web - www.LTBLtech.com

800.557.0098 | golight.com

GO LIGHT



DURABLE
VERSATILE



POWERFUL
GUARANTEED

NEW J116F1 Series UL Approved Relay from CIT Relay & Switch



CIT Relay & Switch is now offering the J116F1 Series providing 50A switching capabilities in the industry's smallest package size, ideal for when spacing is tight. Available with standard or wide contact terminals for better heat transfer, the J116F1 can be used in a variety of applications such as buses, forklifts, and golf carts. This relay conforms to IEC61810-1 Reinforced Insulation and withstands up to 8kV Surge Voltage per IEC61810-7. The J116F1 Series relays are UL F class rated standard with UL approval.

CIT Relay & Switch is an industry leading manufacturer of RoHS compliant electromechanical relays, switches, and solid-state relays. Our product is supported by a worldwide network of distributors and manufacturer's representatives. For more information about the CIT Relay & Switch broad line of relays and switches, contact our team at 763-535-2339 or sales@citrelay.com. Our websites are www.citrelay.com & www.pickercomponents.com •

"PROP THAT DOOR OPEN WITH THE PROPPER"

Commercial, Residential, Industrial, Hotel/Motel & Deliveries

- ❑ Compact, Lightweight - Only 5 oz.
- ❑ Magnitized for Convenient Storage
- ❑ Easy To Open, Folds When Not In Use
- ❑ Safe, Secure Design, Never Slips Off Hinge



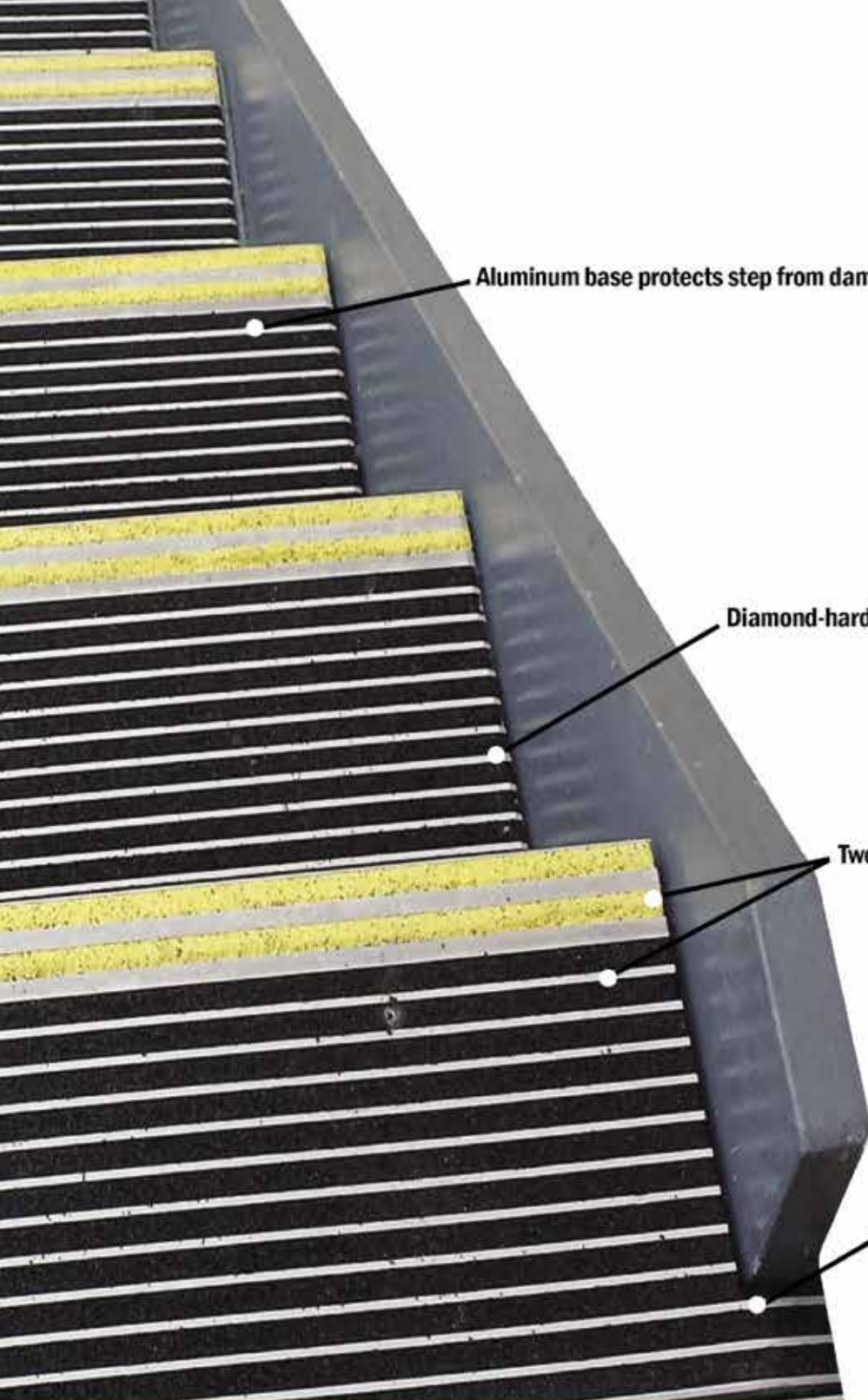
www.PropperStopper.com

MADE IN USA 



STAIRMASTER®

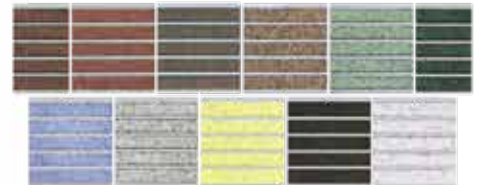
SAFETY TREADS



Aluminum base protects step from damage

Diamond-hard aluminum oxide grit for maximum durability

Two-tone treads available for improved visibility
11 Color options to match any decor



Custom cut to fit any stair



STAIRMASTER®

- Extruded Aluminum Stair Nosing
- For Both Indoor and Outdoor Use
- Excellent safety at a low cost
- Restores and modernizes damaged stairs
- Ready to Install Convenience

Wooster Products Inc.

Make every step
a safe one!

Contact us today for more information
800-321-4936 | woosterproducts.com

Relax On Payroll Fridays

- 5 Minute Friday Payroll
- Internet Based • Encrypted
- Avoid Jail Time and Costly Fines
- Identifies All Davis Bacon Compliance Errors
- 80% Savings of Time and Money Compared to Manual Payroll Preparation





STRUCTURAL STEEL CO., INC.

Pre-Engineered Buildings Built to Withstand The Rugged Northeast Winters

- Commercial, Industrial and Agricultural Buildings Built to Satisfy Your Building Needs
 - Pre-Engineered Steel Packages
 - Pre-Engineered Post Frame Packages
 - Mini Storage Buildings



*Call For a Quote On
Your Next Project*

***We Manufacture 26 & 29 ga.
Steel Roofing & Siding***



STRUCTURAL STEEL CO., INC.



607 Rt. 13 S, Cortland, NY 13045

National: 1-800-323-7739



(607) 753-9384 • Fax: (607) 753-6272 • www.essexsteel.com

Ad Index

Company	Pg.	Website
American Slip Meter	12	www.americanslipmeter.com
Dorlen	24	www.dorlen.com
eMars	22	www.emarsinc.com
Essex Steel Structures	23	www.essexsteel.com
Federal Knife	IFC	www.federalknife.com
Golight	19	www.golight.com
Jesco	1, 10	www.jescoonline.com
Krenz Vent	2	www.krenzvent.com
LTBL	18, BC	www.ltbltech.com
Olfa	15	www.olfa.com
Omega	16	www.omegandl.com
Propper Stopper	20	www.propperstopper.com
Safe T Nose	5	www.safetnose.com
Safety Rail Co	3, 7, 17, IBC	www.safetyrailcompany.com
Sky Hook	9	www.skyhookmfg.com
Super Duty Fans	12	www.superdutyfans.com
Wooster	21	www.wooster-products.com
X-Insurance	11	www.xinsurance.com
Yale Cordage	13	www.yalecordage.com



OIL ALERT[®] LIQUID LEAK DETECTOR

DETECT OIL LEAKS AND SPILLS...FAST!

- AVOID OPERATIONS SHUT-DOWN
- REDUCE ENVIRONMENTAL RISKS
- MINIMIZE COSTLY CLEAN-UP
- MONITOR OFF-SITE EQUIPMENT

A small amount of oil (1/32 inch) seeping under Oil Alert activates it's loud "on/off" alarm and/or relay contact output. The low profile dome shaped unit guards against undetected leakage in areas of oil lubricated / hydraulic equipment, stand-by generators, pressurized piping and fuel oil storage locations...

5 year Limited Warranty

DORLEN Products Inc.
6615 W. Layton Ave. Milwaukee, WI. 53220

Go to WWW.OIL-ALERT.COM
OR CALL: 1-800-533-6392
FOR MORE INFO!!



REDEFINING COMPREHENSIVE ROOFTOP SAFETY

TURN-KEY SAFETY RAIL SOLUTIONS FROM START TO FINISH
INSPECT | SPECIFY | BUILD | INSTALL



SRC Mobile Safety Rails set the industry standard for OSHA compliant safety solutions to prevent falls and injury.



PROTECT LIVES.
BE OSHA COMPLIANT.
CONTACT US TODAY.

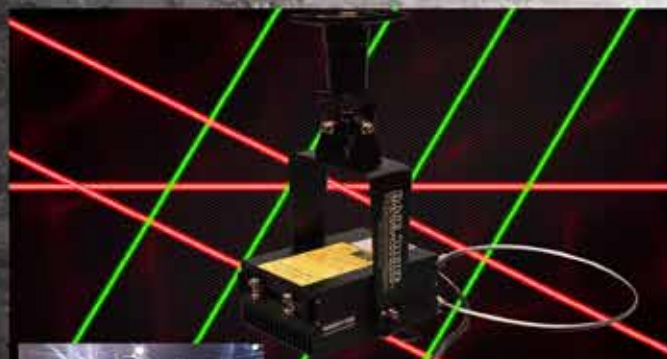


SafetyRailCompany
Fall Protection for Life and Compliance

SAFETYRAILCOMPANY.COM | 888.434.2720

Why Laser Lines and Projected Signs? Because, You're Sick of Painting & Taping!

NEW SOCIAL DISTANCING GOBO Images For LightCop.



www.LTBLtech.com

615.593.0510