

Today's

October 2022

# Industrial Products & Solutions™

The Complete Purchasing Guide for Today's Industrial Market

[www.ipsmag.net](http://www.ipsmag.net)



**JLG Expands Authorized Service Provider  
Network to Support Customers'  
Maintenance and Repair Needs**

Why Laser Lines and Projected Signs?  
**Because, You're Sick of Painting & Taping!**

# NEW SOCIAL DISTANCING GOBO Images For LightCop.



**DOCK RIGHT**  
LASER DOCKING TECHNOLOGY  
Dock Right Laser System, Div. of LTBLTech, LLC  
LOSS PREVENTION FOR THE 21ST CENTURY  
[www.LTBLTech.com](http://www.LTBLTech.com)

**LTBL** TECH "The Original"  
**LIGHTCOP**  
- Loss Prevention For The 21st Century -



[www.LTBLtech.com](http://www.LTBLtech.com)

**615.593.0510**

# REDEFINING COMPREHENSIVE ROOFTOP SAFETY

TURN-KEY SAFETY RAIL SOLUTIONS FROM START TO FINISH  
INSPECT | SPECIFY | BUILD | INSTALL



SRC Mobile Safety Rails set the industry standard for OSHA compliant safety solutions to prevent falls and injury.



PROTECT LIVES.  
BE OSHA COMPLIANT.  
CONTACT US TODAY.



**SafetyRailCompany**  
Fall Protection for Life and Compliance

SAFETYRAILCOMPANY.COM | 888.434.2720

TIPS Contents • October 2022

PG 4	Raising the Standard of Corrosion Protection for Routine Packaging of Metals
PG 8	Marsh Instruments Introduces Differential Pressure Gauges
PG 12	JLG Expands Authorized Service Provider Network to Support Customers' Maintenance and Repair Needs
PG 18	New Norton Cutting and Grinding Wheels for Aluminum Offer Best in Class Performance
PG 24	Ad Index



**Pg 18**

# Today's Industrial Products & Solutions

Vol. 22 Issue 10

**PRESIDENT**

Glen Hobson  
205-441-5591  
glen@tipsmag.net

**ASSOCIATE PUBLISHER**

Bart Beason  
205-624-2180  
bart@tipsmag.net

**ADMINISTRATIVE DIRECTOR**

Steven Hobson  
steven@tipsmag.net

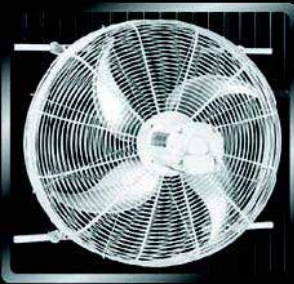
**EDITOR**

Brandon Greenhill  
brandon@handfmedia.net

**CREATIVE/ WEB DIRECTOR**

Jacklyn Greenhill  
jacklyn@handfmedia.net

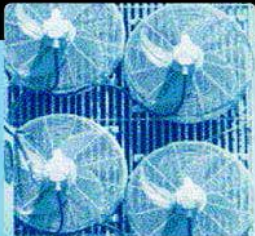
## Get Cool!



**Extend transformer life!**

**Increase transformer capacity up to 166%!**

- expert technical assistance
- low sound levels
- energy-efficient motors
- large inventory
- one-piece cast aluminum blades
- galvanized or stainless steel guards



quality engineered, performance tested

p.o. box 187 germantown, wisconsin 53022

262.255.2310

[www.krenzvent.com](http://www.krenzvent.com)

P.O. Box 1568 • Pelham, AL 35124  
Phone: 205-441-5591 • Fax: 205-624-2185  
[www.tipsmag.net](http://www.tipsmag.net)  
[info@tipsmag.net](mailto:info@tipsmag.net)



*Today's Industrial Products & Solutions*™ is published ten times a year on a monthly basis by Southern Digital Publishing, Inc. *Today's Industrial Products & Solutions*™ is distributed free to qualified subscribers. Non-qualified subscription rates are \$57.00 per year in the U.S. and Canada and \$84.00 per year for foreign subscribers (surface mail). U.S. Postage paid at Birmingham, Alabama and additional mailing offices.

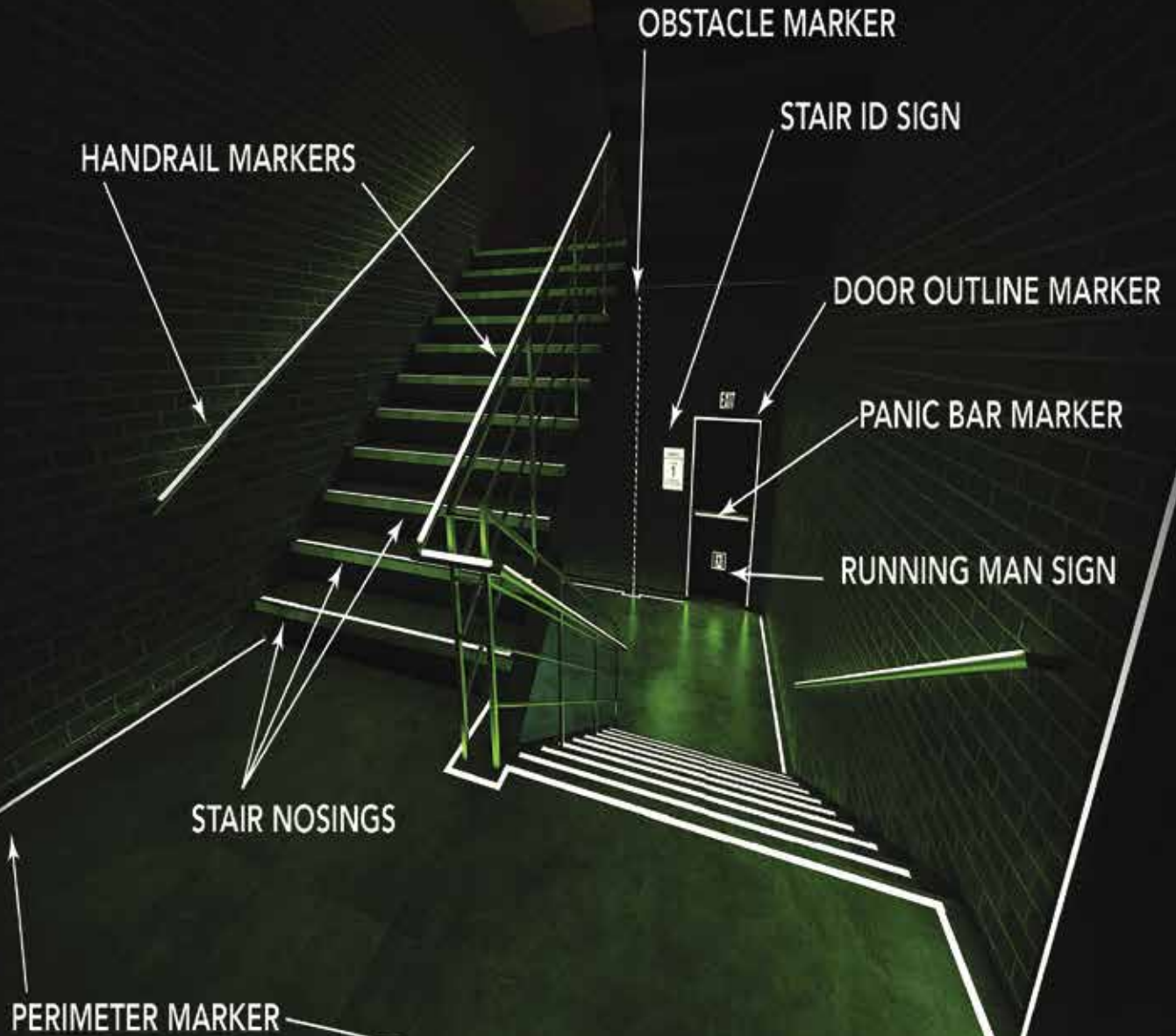
*Today's Industrial Products & Solutions*™ is distributed to qualified owners and managers in the industrial industry. Publisher is not liable for all content (including editorial and illustrations provided by advertisers) of advertisements published and does not accept responsibility for any claims made against the publisher. It is the advertiser's or agency's responsibility to obtain appropriate releases on any item or individuals pictured in an advertisement. Reproduction of this magazine in whole or in part is prohibited without prior written permission from the publisher.

POSTMASTER: Send address changes to  
Southern Digital Publishing, Inc. P.O. Box 1568  
Pelham, AL 35124  
PRINTED IN THE USA

# Safe-T-Nose<sup>®</sup>

LEAVE NO DOUBT • THIS WAY OUT • EXIT SAFELY

SAFETNOSE.COM • 1-855-723-6673



**IFC/IBC REQUIRED EGRESS  
MARKINGS AND SIGNS**



## Raising the Standard of Corrosion Protection for Routine Packaging of Metals

When packaging metal components for shipment or storage, it is important to consider the length of time and environment to which the package will be exposed. The potential for fluctuating temperatures, humidity, and moisture condensation prompts manufacturers to routinely add desiccant pouches to absorb moisture and ideally fend off corrosion. However, this standard shipping and storage procedure is limited in its protection powers. Manufacturers and asset owners can easily raise the standard of protection by supplementing or replacing desiccant with a Cor-Pak® 1-MUL/8-MUL Pouch from Cortec® Corporation.



# SAFELY Lifts Up To 500 lbs!

- Ergonomic
- Portable
- Lightweight
- Meets OSHA & ASME Requirements

## Customized Safety Lifting Devices For Any Application

Available in both  
**CHAIN & CABLE**  
Configurations



The Sky Hook is your personal safety lifting solution, preventing lifting injuries while saving you both time and money!

# 800-4-SKYHOOK

800-475-9466 • 208-365-5770

[www.skyhookmfr.com](http://www.skyhookmfr.com)

# SKY HOOK

ATTCO, Inc. OSA  
by SYCLONE ATTCO SERVICE

### *Passive vs. Active Corrosion Protection*

Desiccant serves the important purpose of absorbing moisture to protect moisture-sensitive goods. However, when used in this way to inhibit corrosion on metals, protection is limited. Desiccant offers passive protection by only eliminating the source of the problem to the extent that it can absorb moisture. Unfortunately, if there is not enough desiccant to absorb all moisture in the environment, the attempt at corrosion protection may fail.

In contrast, Cor-Pak® 1-MUL/8-MUL Pouches offer active corrosion protection, even in the presence of residual moisture. Vapor phase Corrosion Inhibitor powder inside the pouches vaporize and escape through the pouch's breathable membrane, traveling to and adsorbing on all metal surfaces in the enclosure. This VpCI® molecular layer actively protects the metal by hindering the normal corrosion reaction between metal, oxygen, and an electrolyte (e.g., water) from taking place. When the package is opened and the metal components removed, the VpCI® layer does not require cleaning because it simply evaporates.

### *How to Use Cor-Pak® 1-MUL/8-MUL Pouches*

Cor-Pak® 1-MUL/8-MUL Pouches can be used alone or in conjunction with desiccant or other VpCI® packaging materials. Application is very similar to desiccant pouches; Cor-Pak® 1-MUL Pouches are easy to insert into the package manually or automatically. As its name implies, one Cor-Pak® 1-MUL Pouch provides enough protection for up to 1.0 cubic foot (28 L) of enclosed space. One Cor-Pak® 8-MUL Pouch provides enough protection for up to 8 cubic feet (0.23 m<sup>3</sup>). The pouches can be added as the sole source of corrosion protection inside standard corrugated boxes, plastic bags, or wood or metal contain-

ers. They can also be used as an extra source of VpCI® to complement other VpCI® packaging materials. For example, while VpCI®-126 Bags or Film do emit Vapor phase Corrosion Inhibitors, adding a Cor-Pak® 1-MUL or 8-MUL Pouch ensures a plentiful dose of VpCI® is present within the container when extra protection may be needed based on the size of the enclosure, the length of the storage period, or the harshness of the environment.

### *Where to Use Cor-Pak® 1-MUL/8-MUL Pouch*

The Cor-Pak® 1-MUL/8-MUL Pouch can be used for almost any metal part that is packaged in a relatively small enclosure. Possible uses include protection of:

- Completed assemblies, parts, and components
- Parts in antistatic packages
- Motors
- Mechanical controls
- Precision machined or stamped parts
- Marine and commercial electronic equipment
- Tools

Real life examples range from storing power plant spare fuses with a Cor-Pak® 1-MUL Pouch inside a VpCI®-126 EM UV Bag, to long-term storage of rear differential units (automotive service parts that might not be needed for 15 years) with a Cor-Pak® 1-MUL/8-MUL Pouch wrapped inside Cor-Lam® LD VpCI® Barrier Laminate.

Whatever the need, Cor-Pak® 1-MUL/8-MUL Pouches are a convenient way to add corrosion protection inside packaging or storage enclosures for an added safeguard in the presence—or absence—of moisture. Contact Cortec® to learn more:

**[www.cortecpackaging.com/contact-us/](http://www.cortecpackaging.com/contact-us/)** •



# INDUSTRIAL ROOFTOP SAFETY MADE SIMPLE

TURN-KEY SAFETY RAIL SOLUTIONS FROM START TO FINISH

INSPECT | SPECIFY | BUILD | INSTALL



**SRC**  
**SITE SAFE**

PROVEN PROCESS

INSPECT | SPECIFY | BUILD | INSTALL

SRC Mobile Safety Rails set the industry standard for OSHA compliant safety solutions to prevent falls and injury.



PROTECT LIVES.  
BE OSHA COMPLIANT.  
CONTACT US TODAY.



**SafetyRailCompany**  
Fall Protection for Life and Compliance

SAFETYRAILCOMPANY.COM | 888.434.2720



## Marsh Instruments Introduces Differential Pressure Gauges

*New offering backed by name and experience of 1.5 century brand*

Marsh Instruments is introducing a new line of differential pressure gauges, devices that measure the difference between two inlet pressures in a system using just one instrument. They can help extend equipment life and prevent malfunction. These are the first differential pressure gauges backed by Marsh Instruments' century-and-a-half reputation as the standard of accuracy.

Diaphragm-type and piston-type differential pressure gauges are in stock and available to ship now through authorized distributors. Other configurations will be rolled out soon, and can also be manufactured to specific customer demand.

"For the first time, customers in need of differential pressure gauges can get them from the trusted Marsh name," said Barrett Wall, vice president, sales and marketing, Marsh Instruments. "They can expect a high-quality gauge that is durable, accurate – and in stock. We look forward to continuing to expand our offering to meet the needs of customers throughout our core markets."

Options include aluminum or 316SS wetted parts, multiple dial sizes of 2.5", 4", 4.5", and 6", static pressures up to 6000 PSI, inline, bottom, or back connections/ports, and direct, front flange, 2" pipe, and surface mounting. Maximum/minimum pointer and integrated pressure switches are also available.

Differential pressure gauges from Marsh Instruments can detect clogs, flow abnormalities, and help determine proper system functioning in diverse applications such as oil and gas, irrigation, HVAC, and filtration, as well as measuring liquid levels in cryogenic tanks. Large dial versions are available for use on backflow prevention and test applications in municipal water systems.

For more information, visit [www.marshbellofram.com](http://www.marshbellofram.com) •

# jESCOHYDRATILT™ DUMPERS



## HYDRAULICALLY CONTROLLED HOPPERS

These units are ideal where control of the quantity of material dumped or the rate of discharge is critical. They operate off the hydraulic system of your forklift and come complete with male quick-disconnect hoses for easy attachment to the forklift.

# jESCO® PARTITIONS



## DIAMOND WIRE MESH ENCLOSURES

Send us the footprint of your project and allow our engineers to assist you on your next project!

Division 10 22 13.



## CONVERT YOUR FORKLIFT INTO A WORK PLATFORM!

Available in 40", 72", 96", and 120" lengths.

jESCO® WORK PLATFORM



# jESCOGARD®

## PROTECTIVE GUARD RAILING

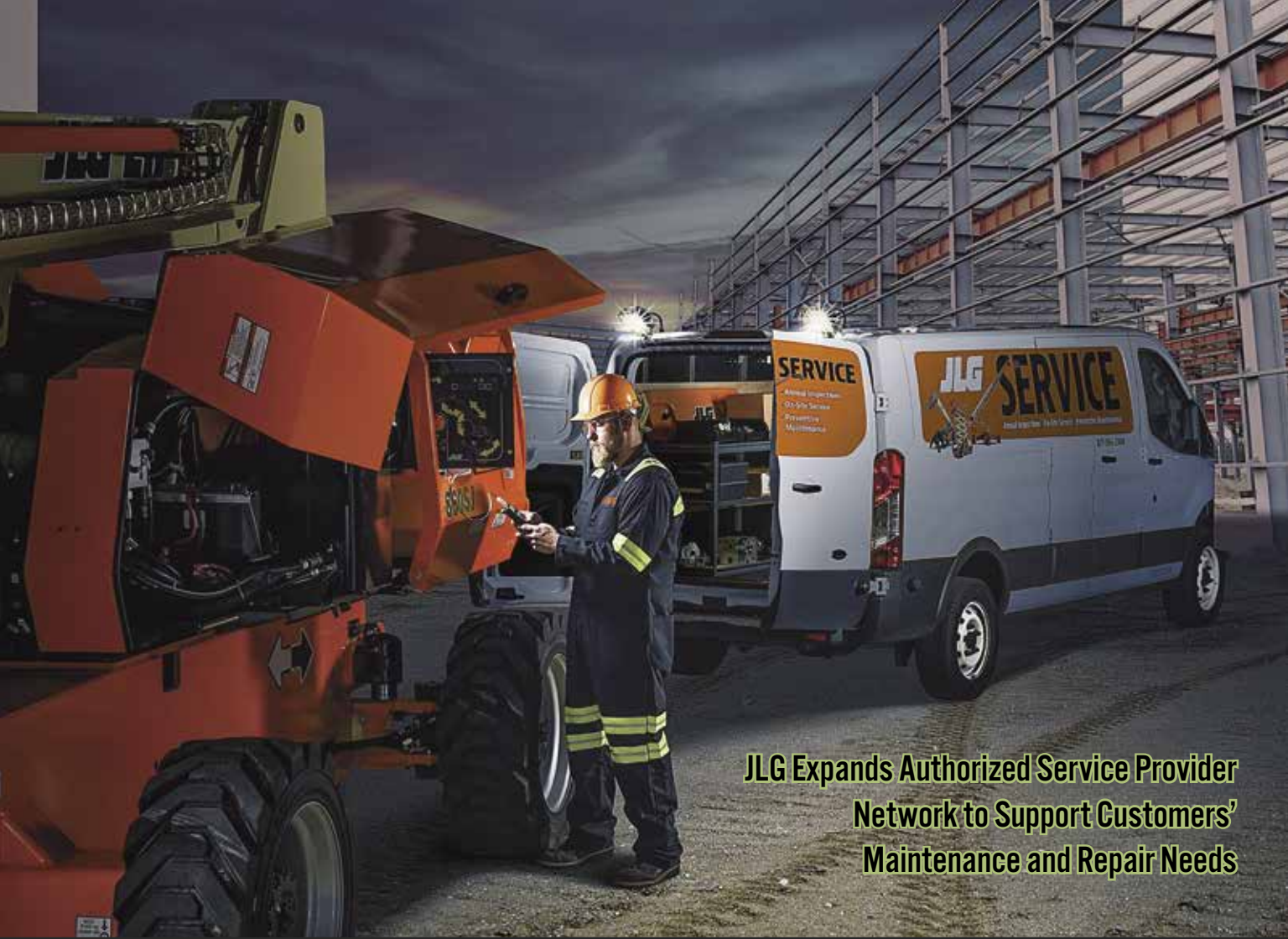
These versatile guards act as both a visual and physical barrier to help protect people and property such as aisles, docks, conveyors and other equipment. Bolted rails are designed and tested to stop a 10,000 lbs load impacting at 4 mph from breaking through. Lift-out rails shown. All hardware is included.



Call 800-529-6697  
Visit [www.JescoOnline.com](http://www.JescoOnline.com)

**jESCO**  
— Since 1932 —<sup>®</sup>

Jesco Industries, Inc.  
Ph: 517-542-2903 Fax: 517-542-2501  
PO Box 388 Litchfield, MI 49252-0388

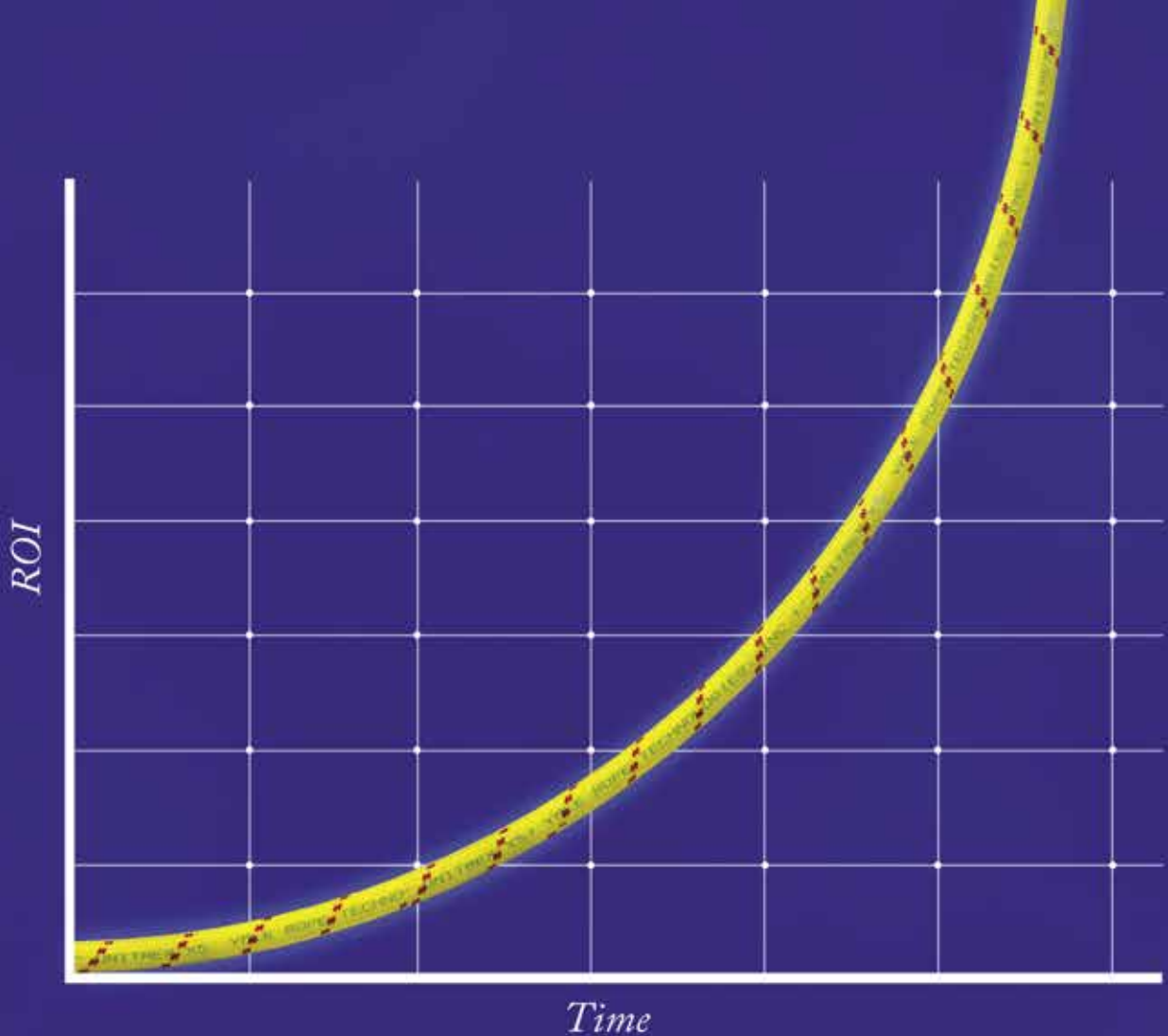


## **JLG Expands Authorized Service Provider Network to Support Customers' Maintenance and Repair Needs**

*The company continues to grow its independent service operations across the nation*

JLG Industries, Inc., an Oshkosh Corporation company [NYSE:OSK] and leading global manufacturer of mobile elevating work platforms (MEWPs) and telehandlers, is expanding its network of Authorized Service Providers in the United States to provide equipment repair, warranty, maintenance, inspections, parts and other support services nationwide to JLG® customers, no matter where their equipment is working. JLG's independent service operations are available to complete service work on all makes and models of equipment within their defined territories.

"Many of our customers have limited and overtaxed in-house service capabilities, and they are looking to outsource maintenance and repair work to keep their shops efficient," says Dan Fry, JLG's senior program manager for Authorized Service Providers. "When it comes to maintaining the quality and maximum value of JLG machines, there is no substitute for good preventive maintenance and care. With our network of authorized service providers, JLG confidently provides them with responsive, world-class quality service and support, available throughout the life of our products."



## Unitrex XS™ Max Wear. Unmatched performance in the field and in the boardroom.

Electric line stringing is easier and more economical with Unitrex™. Made with a core of Honeywell Spectra®, it is up to 10 times lighter than steel, while delivering comparable strength. The urethane-coated polyester jacket provides excellent abrasion resistance for great productivity that lasts.

To learn more, visit [www.yalecordage.com](http://www.yalecordage.com)

**YALE CORDAGE**  
Performance. Passion. Possibilities.

77 Industrial Park Road | Saco, Maine 04072 | p (207) 282-3396, f (207) 282-4620

According to Fry, JLG authorized service providers can serve customers in various capacities, including warranty service work, local parts support, inspection services, mobile and in-shop repair services, as well as maintenance and repair work.

### Warranty Service Work

JLG service providers are authorized to complete warranty work on all JLG equipment. This service includes processing the claim paperwork and handling all the repairs.

### Local Parts Support

With access to the industry's largest resource of JLG genuine and remanufactured equipment parts, as well as a comprehensive inventory of competitive and aftermarket industry parts, available through JLG Online Express, authorized service providers can provide JLG customers with reliable local parts support.

Fry says, "By offering our expansive line of industry products, these independent service locations can help JLG customers keep their fleets running in peak condition, reducing the risk for unplanned downtime and costs associated with needing to call in backup machines."

### Inspection Services

When JLG customers need assistance with scheduling, completing, and documenting various inspection services, such as pre-delivery and annual inspections, JLG Authorized Service Providers can help them meet the requirements of machine ownership.

# SLIP AND FALL PREVENTION!

**Since  
1993**

NEW!



**TESTING DYNAMIC  
COEFFICIENT OF  
FRICTION (DCOF)  
ASM 925**

## DIGITAL ASM 825A SLIP METER

**WET AND DRY TESTING  
CALIBRATES TO ANSI/NFSI B101.1**

---

**SAFE FLOORS MAY INCREASE PRODUCTIVITY  
AND WILL CERTAINLY REDUCE LOSSES**

---

**SCOF RESULTS WITH AN EASY-TO-USE  
PORTABLE FLOOR FRICTION TESTER**

---

**PH: 941-681-2431 | FAX: 941.681.2487**

---

**AMERICAN SLIP METER®**

---

**WWW.AMERICANSLIPMETER.COM**





## Custom Insurance for the Construction Industry

### With XINSURANCE, You Get...

- All-In-One Approach
- Agent Friendly
- Limits up to \$10MM
- Property & Casualty
- Professional Liability
- Commercial Auto Liability  
(available in most states)
- Products Liability
- Exclusions/Gaps in Current Coverage & More

Ask us about our new coverage option – Communicable Disease Liability



To get your free custom insurance quote for the construction industry, visit [www.xinsurance.com](http://www.xinsurance.com)

You can also contact Logan Fitzgerald directly at **801.304.5562** or [loganf@xinsurance.com](mailto:loganf@xinsurance.com)

XINSURANCE is powered by Evolution Insurance Brokers, LC ("EIB"), an excess and surplus lines insurance brokerage. XINSURANCE is a DBA of EIB, which is domiciled in and has its principal place of business in Sandy, Utah. This insurance product is offered by an unlicensed surplus lines insurer. The NPN for EIB is 5464658 and CA license number is OH93938.

# XINSURANCE

**WHAT ARE YOU DOING FOR FANS?**



**SUPER DUTY FANS**

**BE COOL  
BE SAFE**

**HAPPY EMPLOYEES ARE  
PRODUCTIVE EMPLOYEES  
& THEY DON'T LEAVE**

Brutal summer heat will melt your employee productivity and motivation. Now you can shower them with air to keep them safe and productive with Super Duty Overhead and Floor Fans, the new affordable approach to circulating air in tough industrial areas.

**STARTING \$995!  
AT ONLY**

CALL US OR VISIT  
OUR WEBSITE TODAY

**SUPERDUTYFANS.COM**  
**469-934-6640**

MADE IN TEXAS

© 2022 Super Duty Fans, LLC. All Rights Reserved

*Mobile & In-Shop Repair Services*

JLG Authorized Service Providers offer JLG customers a dependable, cost-effective resource to keep their JLG equipment fleets operational in the field.

*Maintenance and Repair Work*

With an ongoing need for preventive maintenance and repairs on JLG and competitive equipment products within their operations, JLG Authorized Service Providers offer a consistent, trustworthy option to provide these services as and when needed.

To find a JLG Authorized Service Provider, click here. To learn more about becoming a JLG Authorized Service Provider, download the Service Provider Program Flyer or click here to visit the Authorized Service Provider program page on [www.JLG.com](http://www.JLG.com) •

**LTBLtech, LLC - Call: 615.593.0510**

**DOCK RIGHT**  
LASER DOCKING TECHNOLOGY  
Dock Right Laser System  
Div. of LTBLtech, LLC  
LOSS PREVENTION FOR THE 21ST CENTURY  
[www.LTBLtech.com](http://www.LTBLtech.com)

**LTBL TECH "The Original"**  
**LIGHTCOP**  
- Loss Prevention For The 21st Century -

**LASER LINE'S**



**PROJECTED SIGN'S**



**Because Painting & Taping Sucks!**

**Visit us on the web - [www.LTBLtech.com](http://www.LTBLtech.com)**

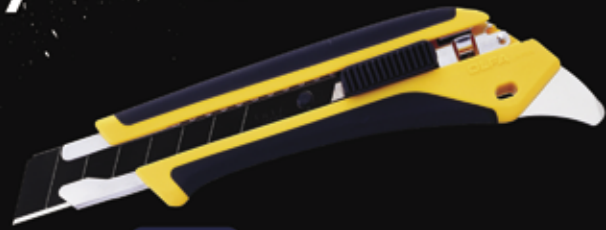


UPGRADE YOUR

# BLADE

## X-Series Fiberglass-Reinforced Snap-Blade Utility Knives

- Jobsite tough
- Anti-slip grip
- Extra sharp black blades



LA-X 18mm  
3/4"



XH-1 25mm  
1"



MXP-AL 18mm  
3/4" NEW  
2019

Learn why *Nothing Cuts Like an OLFA*

# INDUSTRIAL ROOFTOP SAFETY MADE SIMPLE

TURN-KEY SAFETY RAIL SOLUTIONS FROM START TO FINISH  
INSPECT | SPECIFY | BUILD | INSTALL



SRC Mobile Safety Rails set the industry standard for OSHA compliant safety solutions to prevent falls and injury.



PROTECT LIVES.  
BE OSHA COMPLIANT.  
CONTACT US TODAY.



**SafetyRailCompany**  
Fall Protection for Life and Compliance

SAFETYRAILCOMPANY.COM | 888.434.2720

# Relax On Payroll Fridays

- 5 Minute Friday Payroll
- Internet Based • Encrypted
- Avoid Jail Time and Costly Fines
- Identifies All Davis Bacon Compliance Errors
- 80% Savings of Time and Money Compared to Manual Payroll Preparation



***e - Mars, Inc.***  
"Compliance at your Fingertips"  
58,000+ Construction Clients

**eMarsinc.com**  
**Ph: 480-595-0466**

# OMEGA

## SAFETY BARRIERS & GUARDS



SAFETY BARRIERS



R-U-F PORTABLE BARRIERS



PIPE GUARDS



COLUMN GUARDS



CORNER SHIELDS



BOLLARDS



HANDRAILS & GATES



RACK GUARDS



QUIK-STEP STAIRS



TRAK-SHIELD

Downspout Pipe Guards, HDPE Bollard Covers and many other safety products available.

[www.omegaindl.com](http://www.omegaindl.com)

800-521-8272

Omega Industrial Products - The Nation's Leading Supplier Of Safety Barriers & Guarding Products

## New Norton Cutting and Grinding Wheels for Aluminum Offer Best in Class Performance

Saint-Gobain Abrasives, one of the world's largest abrasives manufacturers, has introduced its new "Norton for Aluminum" Thin Wheels for the right angle cutting and grinding of aluminum and other non-ferrous soft metals. High quality, extra-friable and self-sharpening aluminum oxide grain and specialized bond technology results in the best cutting and grinding wheel market performance in its class. The new wheels offer aggressive, fast cutting which resists loading and minimizes heat on the workpiece, providing consistent, long-lasting wheel performance.

"As the demand for lighter, stronger materials such as aluminum continues to grow, we are very pleased to offer customers a new, efficient cutting and grinding wheel solution that specifically addresses their application challenges," said Bradley Povelaites, Manager, Product and Commercial Management, Norton | Saint-Gobain Abrasives. "Norton for Aluminum wheels improve throughput and reduce scrap and downtime, saving costs."

Norton for Aluminum wheels have a range of features and benefits including a 5/8"- 11" hub for quick, tool-free wheel changes. Helping to keep metal surfaces clean for defect-free, corrosion-free welding, the new wheels have a contaminate-free bond which does not need any waxes or lubricants. Also, a double coarse layer construction adds versatility and life on applications such as back-grinding and notching. Norton for Aluminum wheels construction is strong and safe, exceeding all the strictest Norton Ameri-



800.557.0098 | [golight.com](http://golight.com)

# GO LIGHT



DURABLE  
VERSATILE



POWERFUL  
GUARANTEED

**Jesco**  
— Since 1932 —

Jesco Industries, Inc.  
950 Anderson Rd PO Box 388  
Litchfield, MI 49252-0388

**ProGMA**  
PROTECTIVE GUARDING MANUFACTURERS  
*safer by Design*

**Jesco does it best!**

Visit **JescoOnline.com**  
Call **800-529-6697**

can ANSI and international safety standards.

Key markets for Norton for Aluminum include aluminum and metal fabrication, welding, shipbuilding, automotive and transportation, aerospace and construction. Applications include aluminum, cut-off, portable grinding, beveling, notching, smoothing welds and offhand stock removal. The new wheels are available in 1/4" Grinding Type 27, 1/8" Cutting/ Notching/ Grinding Type 27, .045" Right Angle Cut-Off Types 01/41 and 27/42, and Straight Cut-Off Type 01/41.

For more information, visit: [www.nortonabrasives.com/sga-common/files/document2021/flyer-wheels-thin-aluminum-8975.pdf](http://www.nortonabrasives.com/sga-common/files/document2021/flyer-wheels-thin-aluminum-8975.pdf)

**"PROP THAT DOOR OPEN WITH THE PROPPER"**  
Commercial, Residential, Industrial, Hotel/Motel & Deliveries

- Compact, Lightweight - Only 5 oz.
- Magnitized for Convenient Storage
- Easy To Open, Folds When Not In Use
- Safe, Secure Design, Never Slips Off Hinge

**THE PROPPER**  
Door Stopper

[www.PropperStopper.com](http://www.PropperStopper.com)

**MADE IN USA**

# INDUSTRIAL ROOFTOP SAFETY MADE SIMPLE

TURN-KEY SAFETY RAIL SOLUTIONS FROM START TO FINISH  
INSPECT | SPECIFY | BUILD | INSTALL



SRC Mobile Safety Rails set the industry standard for OSHA compliant safety solutions to prevent falls and injury.



PROTECT LIVES.  
BE OSHA COMPLIANT.  
CONTACT US TODAY.



**SafetyRailCompany**  
Fall Protection for Life and Compliance

SAFETYRAILCOMPANY.COM | 888.434.2720

# Making perfect connections has never been simpler. In fact, now it's a **SNAP!**

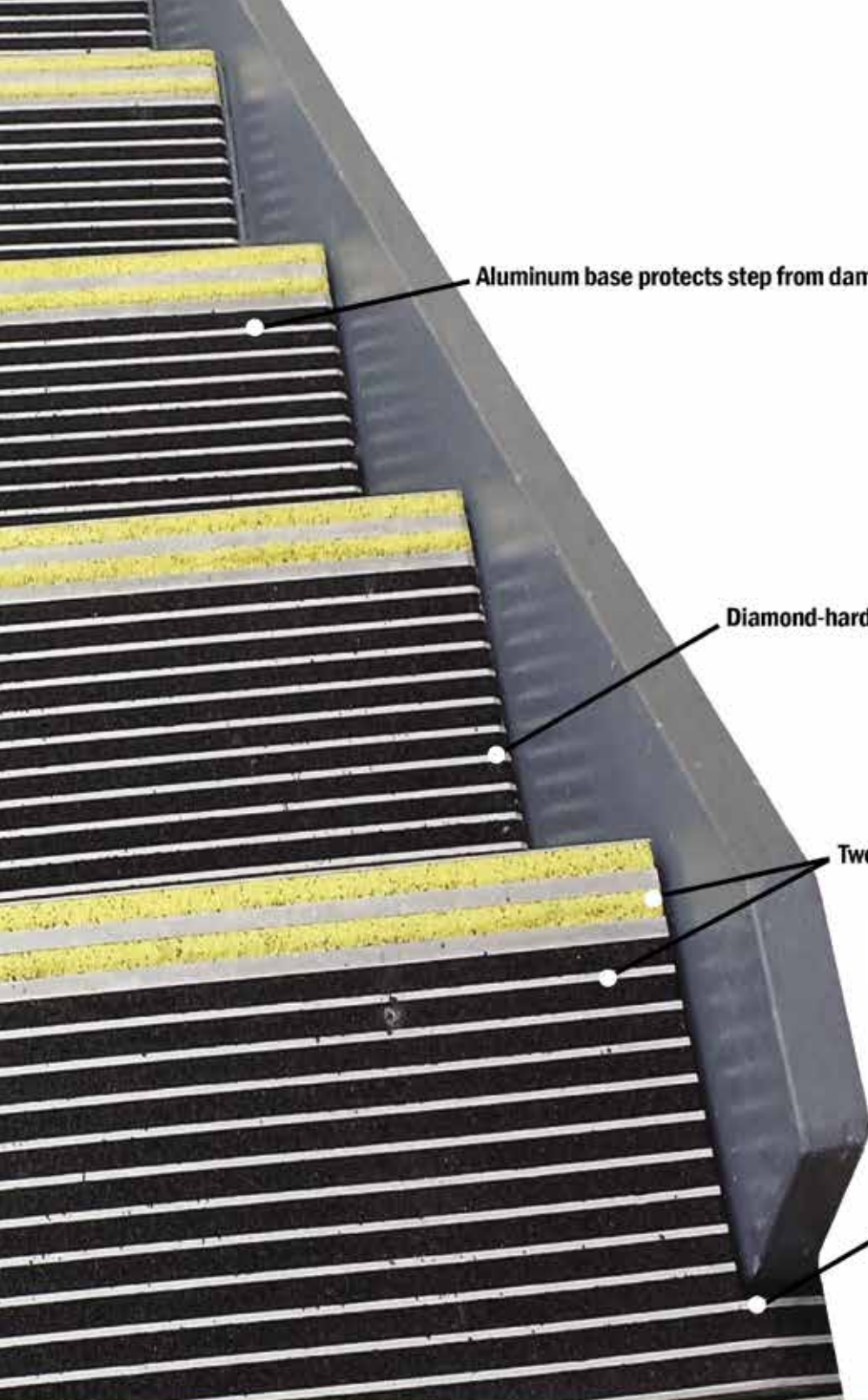
**NEW** SNAP Connectors from Greaves. A revolutionary compression connector concept that gets the job done with just a few turns of a standard wrench!

- ▶ Time-saving, easy installation
- ▶ Superior pull-out strength and conductivity
- ▶ No bulky and costly tools and dies



## GREAVES

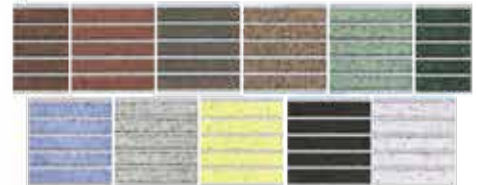




Aluminum base protects step from damage

Diamond-hard aluminum oxide grit for maximum durability

Two-tone treads available for improved visibility  
11 Color options to match any decor



Custom cut to fit any stair



**STAIRMASTER®**  
**SAFETY TREADS**



## STAIRMASTER®

- Extruded Aluminum Stair Nosings
- For Both Indoor and Outdoor Use
- Excellent safety at a low cost
- Restores and modernizes damaged stairs
- Ready to Install Convenience

**Wooster Products Inc.**

Make every step  
a safe one!

Contact us today for more information  
800-321-4936 | [woosterproducts.com](http://woosterproducts.com)

## Ad Index

Company	Pg.	Website
American Slip Meter	12	www.americanslipmeter.com
Dorlen	24	www.dorlen.com
eMars	17	www.emarsinc.com
Essex Steel Structures	BC	www.essexsteel.com
Golight	19	www.golight.com
Greaves	22	www.greaves.com
Jesco	9, 20	www.jescoonline.com
Krenz Vent	2	www.krenzvent.com
LTBL	14, IFC	www.ltbltech.com
Olfa	15	www.olfa.com
Omega	18	www.omegandl.com
Propper Stopper	20	www.propperstopper.com
Safe T Nose	3, IBC	www.safetnose.com
Safety Rail Co	1, 7, 16, 21	www.safetyrailcompany.com
Sky Hook	5	www.skyhookmfg.com
Super Duty Fans	14	www.superdutyfans.com
Wooster	23	www.wooster-products.com
X-Insurance	13	www.xinsurance.com
Yale Cordage	11	www.yalecordage.com



### **OIL ALERT<sup>®</sup>** LIQUID LEAK DETECTOR

**DETECT OIL LEAKS AND SPILLS...FAST!**

- AVOID OPERATIONS SHUT-DOWN
- REDUCE ENVIRONMENTAL RISKS
- MINIMIZE COSTLY CLEAN-UP
- MONITOR OFF-SITE EQUIPMENT

A small amount of oil (1/32 inch) seeping under Oil Alert activates it's loud "on/off" alarm and/or relay contact output. The low profile dome shaped unit guards against undetected leakage in areas of oil lubricated / hydraulic equipment, stand-by generators, pressurized piping and fuel oil storage locations...

**5 year Limited Warranty**

**DORLEN** Products Inc.  
6615 W. Layton Ave. Milwaukee, WI. 53220

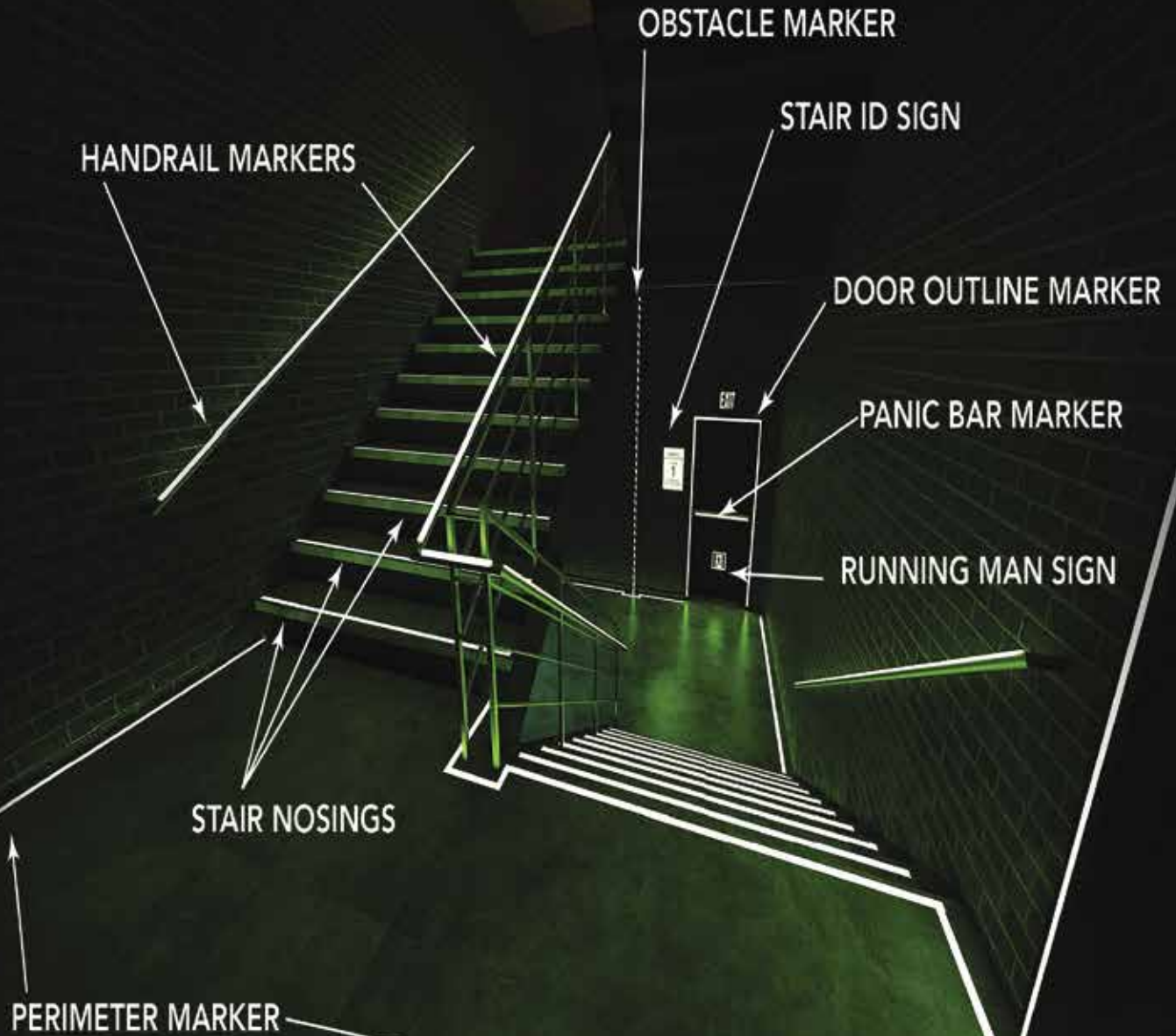
**Go to WWW.OIL-ALERT.COM**  
**OR CALL: 1-800-533-6392**  
**FOR MORE INFO!!**



# Safe-T-Nose<sup>®</sup>

LEAVE NO DOUBT • THIS WAY OUT • EXIT SAFELY

SAFETNOSE.COM • 1-855-723-6673



**IFC/IBC REQUIRED EGRESS  
MARKINGS AND SIGNS**



# STRUCTURAL STEEL CO., INC.

## Pre-Engineered Buildings Built to Withstand The Rugged Northeast Winters

- Commercial, Industrial and Agricultural Buildings Built to Satisfy Your Building Needs
  - Pre-Engineered Steel Packages
  - Pre-Engineered Post Frame Packages
  - Mini Storage Buildings



*Call For a Quote On  
Your Next Project*

***We Manufacture 26 & 29 ga.  
Steel Roofing & Siding***



# STRUCTURAL STEEL CO., INC.



607 Rt. 13 S, Cortland, NY 13045

**National: 1-800-323-7739**



(607) 753-9384 • Fax: (607) 753-6272 • [www.essexsteel.com](http://www.essexsteel.com)